

Anti-WNT2 antibody (231-330) [S5275RM] (STJ11105275)

STJ11105275

GENERAL INFORMATION

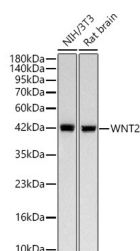
Product Type	Primary antibodies
Short Description	
Applications	WB/ELISA
Host/Source	Rabbit
Reactivity	Human/Mouse/Rat

PRODUCT PROPERTIES

Clonality	Monoclonal
Clone ID	S5275RM
Concentration	Lot specific
Conjugation	Unconjugated
Purification	Affinity purification
Dilution Range	WB:1:7000-1:42000 ELISA:Recommended starting concentration is 1 μ g/mL. Please optimize the concentration based on your specific assay requirements.
Formulation	PBS with 0.05% Proclin300, 0.05% BSA, 50% Glycerol, pH 7.3.
Isotype	IgG
Storage	Store at -20°C for up to 1 year from the date of receipt, and avoid repeat freeze-thaw cycles.
Instruction	

TARGET INFORMATION

Gene ID	7472
Gene Symbol	WNT2
Uniprot ID	WNT2_HUMAN
Immunogen	
Region	231-330
Specificity	A synthetic peptide corresponding to a sequence within amino acids 231-330 of human WNT2 (NP_003382.1).
Immunogen Sequence	GDYLWRKYNGAIQVVMNQDG TGFVANERFKKPTKNDLVY FENSPDYCIRDREAGSLGTA GRVCNLTSRGMDSCCEVMCCG RGYDTSHVTRMTKCGCKFWH



Western blot analysis of various lysates, using WNT2 Rabbit monoclonal antibody (STJ11105275) at 1:7000 dilution. Secondary antibody: HRP Goat Anti-Rabbit IgG (H+L) (STJ5000856) at 1:10000 dilution. Lysates/proteins: 25ug per lane. Blocking buffer: 3% nonfat dry milk in TBST. Detection: ECL Basic Kit. Exposure time: 10s.

This product is suitable for in-vitro studies under the RESEARCH USE ONLY [RUO] licence. This product must not be used as for diagnostic or other medical purposes.
St John's Laboratory Ltd, Knowledge Dock Business Centre, University Way, London, E16 2RD | Tel: 0208 223 3081