

Anti-Plant Actin antibody (1-100) [S5267RM] (STJ11105267)
STJ11105267

GENERAL INFORMATION

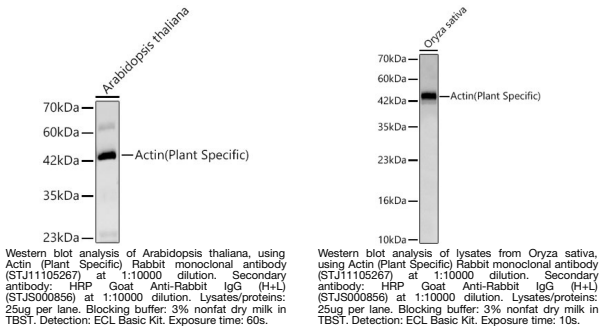
Product Type	Primary antibodies
Short Description	
Applications	WB/ELISA
Host/Source	Rabbit
Reactivity	O.sativa/A.thaliana

PRODUCT PROPERTIES

Clonality	Monoclonal
Clone ID	S5267RM
Concentration	Lot specific
Conjugation	Unconjugated
Purification	Affinity purification
Dilution Range	WB:1:10000-1:60000 ELISA:Recommended starting concentration is 1 Mu g/mL. Please optimize the concentration based on your specific assay requirements.
Formulation	PBS with 0.05% Proclin300, 0.05% BSA, 50% Glycerol, pH 7.3.
Isotype	IgG
Storage	Store at -20°C for up to 1 year from the date of receipt, and avoid repeat freeze-thaw cycles.
Instruction	

TARGET INFORMATION

Gene ID	
Gene Symbol	
Uniprot ID	
Immunogen	
Immunogen Region	1-100
Specificity	A synthetic peptide corresponding to a sequence within amino acids 1-100 of Actin (Plant Specific) (NP_190236.1).
Immunogen Sequence	MADGEDIQPLVCDNGTGMVK AGFAGDDAPRAVFPSIVGRP RHTGVMVGMGQKDAYVGDEA QSKRGILTLKYPIEHGIVNN WDDMEKIWHHTFYNELRVAP



This product is suitable for in-vitro studies under the RESEARCH USE ONLY [RUO] licence. This product must not be used as for diagnostic or other medical purposes.
St John's Laboratory Ltd, Knowledge Dock Business Centre, University Way, London, E16 2RD | Tel: 0208 223 3081