

## Anti-S100A12 antibody (1-92) [S5253RM] (STJ11105253)

STJ11105253

### GENERAL INFORMATION

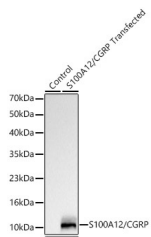
|                          |                    |
|--------------------------|--------------------|
| <b>Product Type</b>      | Primary antibodies |
| <b>Short Description</b> |                    |
| <b>Applications</b>      | WB/ELISA           |
| <b>Host/Source</b>       | Rabbit             |
| <b>Reactivity</b>        | Human              |

### PRODUCT PROPERTIES

|                            |  |
|----------------------------|--|
| <b>Clonality</b>           | Monoclonal   |
| <b>Clone ID</b>            | S5253RM  |
| <b>Concentration</b>       | Lot specific   |
| <b>Conjugation</b>         | Unconjugated   |
| <b>Purification</b>        | Affinity purification  |
| <b>Dilution Range</b>      | WB:1:1000-1:6000<br>ELISA:Recommended starting concentration is 1 $\mu$ g/mL. Please optimize the concentration based on your specific assay requirements. |
| <b>Formulation</b>         | PBS with 0.05% Proclin300, 0.05% BSA, 50% Glycerol, pH 7.3.  |
| <b>Isotype</b>             | IgG  |
| <b>Storage Instruction</b> | Store at -20°C for up to 1 year from the date of receipt, and avoid repeat freeze-thaw cycles.   |

### TARGET INFORMATION

|                           |   |
|---------------------------|---|
| <b>Gene ID</b>            | 6283  |
| <b>Gene Symbol</b>        | S100A12   |
| <b>Uniprot ID</b>         | S10AC_HUMAN   |
| <b>Immunogen</b>          |   |
| <b>Immunogen Region</b>   | 1-92  |
| <b>Specificity</b>        | Recombinant fusion protein containing a sequence corresponding to amino acids 1-92 of human S100A12/CGRP (NP_005612.1). |
| <b>Immunogen Sequence</b> | MTKLEEHLEGIVNIFHQYSV RKGHFDLTSKGELKQLLTKE LANTIKNIKDKAVIDEIFQG LDANQDEQVDFQEFISLVAI<br>ALKAAHYHTHKE                     |



Western blot analysis of 293F and S100A12/CGRP 293F transfected cells, using S100A12/CGRP Rabbit monoclonal antibody (STJ11105253) at 1:1000 dilution. Secondary antibody: HRP Goat Anti-Rabbit IgG (H+L) (STJS000856) at 1:10000 dilution. Lysates/proteins: 25  $\mu$ g per lane. Blocking buffer: 3% nonfat dry milk in TBST. Detection: ECL Basic Kit. Exposure time: 10s.

This product is suitable for in-vitro studies under the RESEARCH USE ONLY [RUO] licence. This product must not be used as for diagnostic or other medical purposes.  
St John's Laboratory Ltd, Knowledge Dock Business Centre, University Way, London, E16 2RD | Tel: 0208 223 3081