

Anti-IMMP2L antibody (38-175) (STJ11105236)

STJ11105236

GENERAL INFORMATION

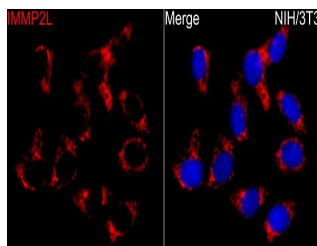
Product Type	Primary antibodies
Short Description	
Applications	WB/IF/ICC/ELISA
Host/Source	Rabbit
Reactivity	Human/Mouse

PRODUCT PROPERTIES

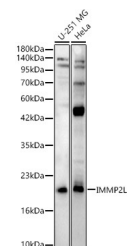
Clonality	Polyclonal
Clone ID	
Concentration	Lot specific
Conjugation	Unconjugated
Purification	Affinity purification
Dilution	WB:1:500-1:1000
Range	IF/CC:1:50-1:200
	ELISA:Recommended starting concentration is 1 Mu g/mL. Please optimize the concentration based on your specific assay requirements.
Formulation	PBS with 0.05% Proclin300, 50% Glycerol, pH 7.3.
Isotype	IgG
Storage	Store at -20°C for up to 1 year from the date of receipt, and avoid repeat freeze-thaw cycles.
Instruction	

TARGET INFORMATION

Gene ID	83943
Gene Symbol	IMMP2L
Uniprot ID	IMP2L_HUMAN
Immunogen	
Immunogen Region	38-175
Specificity	Recombinant fusion protein containing a sequence corresponding to amino acids 38-175 of human IMMP2L (NP_001231535.1).
Immunogen Sequence	TFLDRVACVARVEGASMQPS LNPGGSQSSDVLLNHWKVR NFEVHRGDIVSLVSPKNPEQ KIIKRVIALEGDIVRTIGHK NRYVVKVPRGHIWVEGDHHGH SFDNSNFGPVSLGLLHAHAT HILWPPERWQKLESVLPPEP LPVQREEE



Immunofluorescence analysis of NIH/3T3 cells using IMMP2L Rabbit polyclonal antibody (STJ11105236) at dilution of 1:100 (40x lens). Secondary antibody: Cy3 Goat Anti-Rabbit IgG (H+L) at 1:500 dilution. Blue: DAPI for nuclear staining.



Western blot analysis of various lysates using IMMP2L Rabbit polyclonal antibody (STJ11105236) at 1:700 dilution. Secondary antibody: HRP Goat Anti-Rabbit IgG (H+L) (STJ5000856) at 1:10000 dilution. Lysates/proteins: 25 Mu g per lane. Blocking buffer: 3 % nonfat dry milk in TBST. Detection: ECL Enhanced Kit. Exposure time: A 80s.

This product is suitable for in-vitro studies under the RESEARCH USE ONLY [RUO] licence. This product must not be used as for diagnostic or other medical purposes.
St John's Laboratory Ltd, Knowledge Dock Business Centre, University Way, London, E16 2RD | Tel: 0208 223 3081