

Anti-SLC25A21 antibody (148-247) (STJ11105232)

STJ11105232

GENERAL INFORMATION

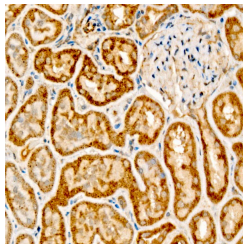
Product Type	Primary antibodies
Short Description	
Applications	WB/IHC-P/ELISA
Host/Source	Rabbit
Reactivity	Human/Rat

PRODUCT PROPERTIES

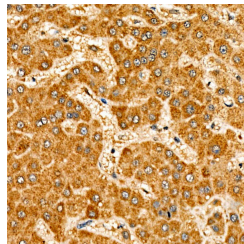
Clonality	Polyclonal
Clone ID	
Concentration	Lot specific
Conjugation	Unconjugated
Purification	Affinity purification
Dilution Range	WB:1:100-1:500 IHC-P:1:50-1:200 ELISA:Recommended starting concentration is 1 µg/mL. Please optimize the concentration based on your specific assay requirements.
Formulation	PBS with 0.05% Proclin300, 50% Glycerol, pH 7.3.
Isotype	IgG
Storage Instruction	Store at -20°C for up to 1 year from the date of receipt, and avoid repeat freeze-thaw cycles.

TARGET INFORMATION

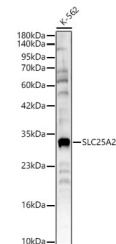
Gene ID	89874
Gene Symbol	SLC25A21
Uniprot ID	ODC_HUMAN
Immunogen	
Immunogen Region	148-247
Specificity	A synthetic peptide corresponding to a sequence within amino acids 148-247 of human SLC25A21 (NP_085134.1). PSTVGYARQIIKKEGWGLQG LNKGLTATLGRHGVFNMYVF GFYYNVKNMIPVNKPILEF WRKFGIGLLSGTIASVINIP
Immunogen Sequence	FDVAKSRIQGQPVPGEIKY



Immunohistochemistry analysis of SLC25A21 in paraffin-embedded rat kidney tissue using SLC25A21 Rabbit polyclonal antibody (STJ11105232) at a dilution of 1:50 (40x lens). High pressure antigen retrieval was performed with 0.01 M citrate buffer (pH 6.0) prior to immunohistochemistry staining.



Immunohistochemistry analysis of SLC25A21 in paraffin-embedded human liver tissue using SLC25A21 Rabbit polyclonal antibody (STJ11105232) at a dilution of 1:50 (40x lens). High pressure antigen retrieval was performed with 0.01 M citrate buffer (pH 6.0) prior to immunohistochemistry staining.



Western blot analysis of lysates from K-562 cells, using SLC25A21 Rabbit polyclonal antibody (STJ11105232) at 1:400 dilution. Secondary antibody: HRP Goat Anti-Rabbit IgG (H+L) (STJ5000856) at 1:10000 dilution. Lysates/proteins: 25µg per lane. Blocking buffer: 3% nonfat dry milk in TBST. Detection: ECL Basic Kit. Exposure time: 180s.

This product is suitable for in-vitro studies under the RESEARCH USE ONLY [RUO] licence. This product must not be used as for diagnostic or other medical purposes.
St John's Laboratory Ltd, Knowledge Dock Business Centre, University Way, London, E16 2RD | Tel: 0208 223 3081