

Anti-SLC25A20 antibody (1-100 aa) [S5213RM] (STJ11105213)
STJ11105213

GENERAL INFORMATION

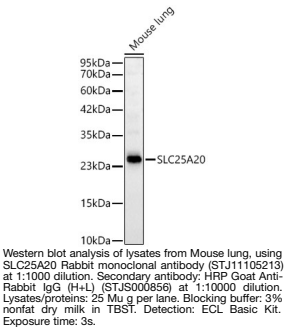
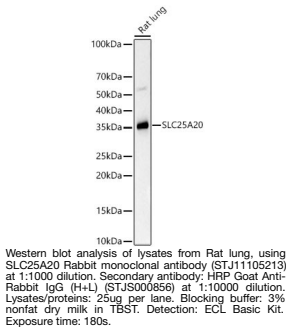
Product Type	Primary antibodies
Short Description	
Applications	WB/ELISA
Host/Source	Rabbit
Reactivity	Mouse/Rat

PRODUCT PROPERTIES

Clonality	Monoclonal
Clone ID	S5213RM
Concentration	Lot specific
Conjugation	Unconjugated
Purification	Affinity purification
Dilution Range	WB:1:500-1:1000 ELISA:Recommended starting concentration is 1 Mu g/mL. Please optimize the concentration based on your specific assay requirements.
Formulation	PBS with 0.05% Proclin300, 0.05% BSA, 50% Glycerol, pH 7.3.
Isotype	IgG
Storage	Store at -20°C for up to 1 year from the date of receipt, and avoid repeat freeze-thaw cycles.
Instruction	

TARGET INFORMATION

Gene ID	788
Gene Symbol	SLC25A20
Uniprot ID	MCAT_HUMAN
Immunogen	
Immunogen	1-100 aa
Region	
Specificity	A synthetic peptide corresponding to a sequence within amino acids 1-100 of human SLC25A20. (NP_000378.1).
Immunogen	MADQPKPISPLKNLLAGGFG GVCLVFVGHPLDTVKVRLQT QPPSLPGQPPMYSGTFDCFR KTLFREGITGLYRGMAAPII
Sequence	GVTPMFAVCFFGFLGKKLQ



This product is suitable for in-vitro studies under the RESEARCH USE ONLY [RUO] licence. This product must not be used as for diagnostic or other medical purposes.
St John's Laboratory Ltd, Knowledge Dock Business Centre, University Way, London, E16 2RD | Tel: 0208 223 3081