

Anti-ATP6V0C antibody (1-100 aa) [S5211RM] (STJ11105211)

STJ11105211

GENERAL INFORMATION

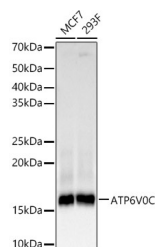
Product Type	Primary antibodies
Short Description	
Applications	WB/ELISA
Host/Source	Rabbit
Reactivity	Human

PRODUCT PROPERTIES

Clonality	Monoclonal
Clone ID	S5211RM
Concentration	Lot specific
Conjugation	Unconjugated
Purification	Affinity purification
Dilution Range	WB:1:500-1:1000 ELISA:Recommended starting concentration is 1 μ g/mL. Please optimize the concentration based on your specific assay requirements.
Formulation	PBS with 0.05% Proclin300, 0.05% BSA, 50% Glycerol, pH 7.3.
Isotype	IgG
Storage Instruction	Store at -20°C for up to 1 year from the date of receipt, and avoid repeat freeze-thaw cycles.

TARGET INFORMATION

Gene ID	527
Gene Symbol	ATP6V0C
Uniprot ID	VATL_HUMAN
Immunogen	
Immunogen Region	1-100 aa
Specificity	A synthetic peptide corresponding to a sequence within amino acids 1-100 of human ATP6V0C. (NP_001685.1).
Immunogen Sequence	MSEKSGPEYASFFAVMGAS AAMVFSALGAAYGTAKSGTG IAAMSVMRPEQIMKSIIIPVV MAGIIAIYGLVVAVLIANSI NDDISLYKSFLQLGAGLSVG



Western blot analysis of various lysates, using ATP6V0C Rabbit monoclonal antibody (STJ11105211) at 1:1000 dilution. Secondary antibody: HRP Goat Anti-Rabbit IgG (H+L) (STJS000856) at 1:10000 dilution. Lysates/proteins: 25 μ g per lane. Blocking buffer: 3% nonfat dry milk in TBST. Detection: ECL Basic Kit. Exposure time: 10s.

This product is suitable for in-vitro studies under the RESEARCH USE ONLY [RUO] licence. This product must not be used as for diagnostic or other medical purposes.
St John's Laboratory Ltd, Knowledge Dock Business Centre, University Way, London, E16 2RD | Tel: 0208 223 3081