

Anti-CD80 antibody (38-245) [S5206RM] (STJ11105206)

STJ11105206

GENERAL INFORMATION

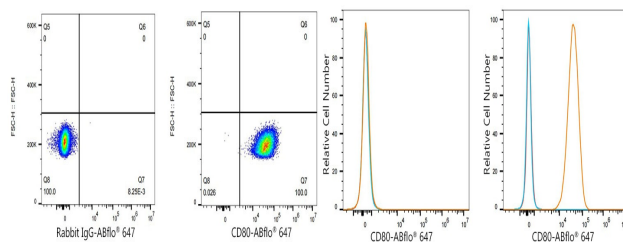
Product Type	Primary antibodies
Short Description	
Applications	WB/FC/ELISA
Host/Source	Rabbit
Reactivity	Human/Mouse/Rat

PRODUCT PROPERTIES

Clonality	Monoclonal
Clone ID	S5206RM
Concentration	Lot specific
Conjugation	Unconjugated
Purification	Affinity purification
Dilution	WB:1:500-1:1000
Range	FC:1:100-1:500
	ELISA:Recommended starting concentration is 1 Mu g/mL. Please optimize the concentration based on your specific assay requirements.
Formulation	PBS with 0.05% Proclin300, 0.05% BSA, 50% Glycerol, pH 7.3.
Isotype	IgG
Storage Instruction	Store at -20°C for up to 1 year from the date of receipt, and avoid repeat freeze-thaw cycles.

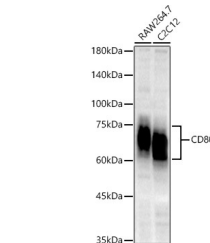
TARGET INFORMATION

Gene ID	12519
Gene Symbol	Cd80
Uniprot ID	CD80_MOUSE
Immunogen	
Immunogen Region	38-245
Specificity	Recombinant fusion protein containing a sequence corresponding to amino acids 38-245 of mouse CD80 (NP_033985.3)
Immunogen Sequence	VDEQLSKSVKDKVLLPCRYN SPHEDESEDRIYWQKHDKV LSVIAGKLKWPEYKNRTLY DNTTYSLIILGLVLSDRGTY SCVWQKKERGTYEVKHLALV KLSIKADFSTPNITESGNPS ADTKRITCFASGGFPKPRFS WLENGRELPGINTTISQDPE SELYTISSQLDFNTRNHTI KCLIKYGDAHVSEDFTWEKP PEDPPDSK

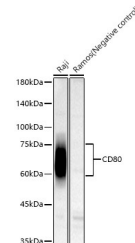


Flow cytometry:1X10⁶ C2C12 cells were surface-stained with ABR@ 647 Rabbit IgG isotype control (2 Mu g/mL, left) or CD80 Rabbit monoclonal antibody (STJ11105206, 2 Mu g/mL, right).

Flow cytometry:1X10⁶ Neuro-2a cells (negative control, left) and C2C12 cells (right) were surface-stained with CD80 Rabbit monoclonal antibody (STJ11105206, 2 Mu g/mL, orange line) or ABR@ 647 Rabbit IgG isotype control (2 Mu g/mL, blue line). Non-fluorescently stained cells were used as blank control (red line).



Western blot analysis of various lysates, using CD80 Rabbit monoclonal antibody (STJ11105206) at 1:1000 dilution. Secondary antibody: HRP Goat Anti-Rabbit IgG (H+L) (STJ5000856) at 1:10000 dilution. Lysates/proteins: 25 Mu g per lane. Blocking buffer: 3% nonfat dry milk in TBST. Detection: ECL Basic Kit. Exposure time: 90s.



Western blot analysis of various lysates, using CD80 Rabbit monoclonal antibody (STJ11105206) at 1:1000 dilution. Secondary antibody: HRP Goat Anti-Rabbit IgG (H+L) (STJ5000856) at 1:10000 dilution. Lysates/proteins: 25 Mu g per lane. Blocking buffer: 3% nonfat dry milk in TBST. Detection: ECL Basic Kit. Exposure time: 45s.

This product is suitable for in-vitro studies under the RESEARCH USE ONLY [RUO] licence. This product must not be used as for diagnostic or other medical purposes.
St John's Laboratory Ltd, Knowledge Dock Business Centre, University Way, London, E16 2RD | Tel: 0208 223 3081