

Anti-CLIC1 antibody (42-241) (STJ11105200)

STJ11105200

GENERAL INFORMATION

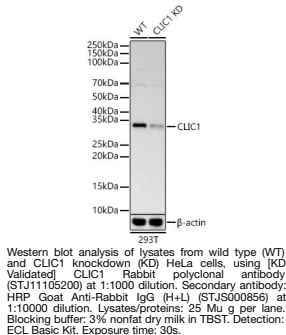
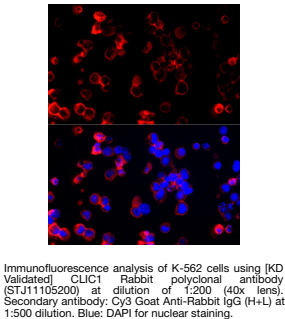
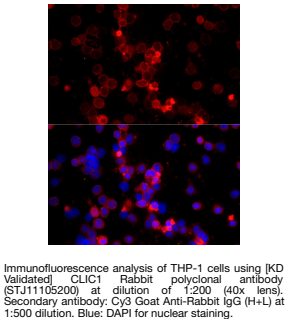
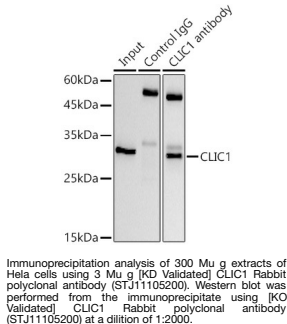
Product Type	Primary antibodies
Short Description	
Applications	WB/IF/ICC/IP/ELISA
Host/Source	Rabbit
Reactivity	Human/Mouse/Rat

PRODUCT PROPERTIES

Clonality	Polyclonal
Clone ID	
Concentration	Lot specific
Conjugation	Unconjugated
Purification	Affinity purification
Dilution Range	WB:1:500-1:1000 IF/CC:1:50-1:200
Formulation	IP:0.5 Mu g-4 Mu g antibody for 200 Mu g-400 Mu g extracts of whole cells ELISA:Recommended starting concentration is 1 Mu g/mL. Please optimize the concentration based on your specific assay requirements
Isotype	IgG
Storage Instruction	PBS with 0.02% Sodium Azide, 50% Glycerol, pH 7.3. Store at-20°C for up to 1 year from the date of receipt, and avoid repeat freeze-thaw cycles.

TARGET INFORMATION

Gene ID	1192
Gene Symbol	CLIC1
Uniprot ID	CLIC1_HUMAN
Immunogen	
Region	42-241
Specificity	Recombinant Protein corresponding to a sequence within amino acids 42-241 of human CLIC1 (NP_001279.2).
Immunogen Sequence	NVTTVDTKRRRETQKLCPPG GQLPFLLYGTEVHTDTNKIE EFLEAVLCPPRYPKLAALNP ESNTAGLDIFAKFSAYIKNS NPALNDNLEKGLLKALKVLD NYLTSPLPEEVDETSAEDEG VSQRKFLDGNELTLADCNLL PKLHIVQVCKKRYRGFTIPE APRGVHRYLSNAYAREEFAS TCPDDEEIELAYEQVAKALK



This product is suitable for in-vitro studies under the RESEARCH USE ONLY [RUO] licence. This product must not be used as for diagnostic or other medical purposes.
St John's Laboratory Ltd, Knowledge Dock Business Centre, University Way, London, E16 2RD | Tel: 0208 223 3081