

Anti-Icam1 antibody (28-493 aa) (STJ11105185)
STJ11105185

GENERAL INFORMATION

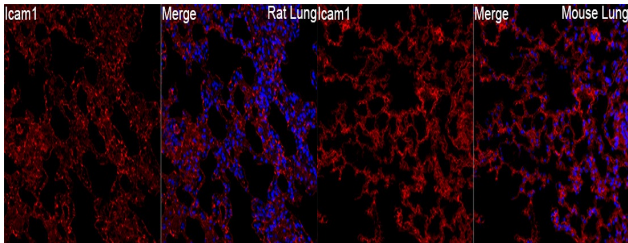
Product Type	Primary antibodies
Short Description	
Applications	WB/IF/ICC/ELISA
Host/Source	Rabbit
Reactivity	Human/Mouse/Rat

PRODUCT PROPERTIES

Clonality	Polyclonal
Clone ID	
Concentration	Lot specific
Conjugation	Unconjugated
Purification	Affinity purification
Dilution	WB:1:500-1:1000
Range	IF/ICC:1:50-1:200
	ELISA:Recommended starting concentration is 1 Mu g/mL. Please optimize the concentration based on your specific assay requirements.
Formulation	PBS with 0.05% Proclin300, 50% Glycerol, pH 7.3.
Isotype	IgG
Storage Instruction	Store at -20°C for up to 1 year from the date of receipt, and avoid repeat freeze-thaw cycles.

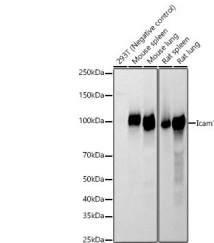
TARGET INFORMATION

Gene ID	25464
Gene Symbol	Icam1
Uniprot ID	ICAM1_RAT
Immunogen	
Immunogen Region	28-493 aa
Specificity	Recombinant fusion protein containing a sequence corresponding to amino acids 28-493 of rat Icam1. (NP_037099.1).
Immunogen Sequence	QVSIHPTAEFLPRGGSVQVN CSSCEDENLGLGLETNWMK DELSSGHNWKLFLSDIGED SRPLCFENC GTTQSSASATI TVYSFPERVELDPLPAWQQV GKNLILRCLVEGGAPRTQLS VLLRGNETLSRQAVDGDGPKEITFTVLASRGDHGANFSCF TELDLRPQGLSLFKNVSEVR QLRTFDLPTRVLKLDTPDLL EVGTQQKFLCSLEGLFPASE AQIYLEMGGMQLTLESTNS



Immunofluorescence analysis of rat lung tissue using Icam1 Rabbit polyclonal antibody (STJ11105185) at a dilution of 1:100 (40x lens). Secondary antibody: Cy3 Goat Anti-Rabbit IgG (H+L) at 1:500 dilution. Blue: DAPI for nuclear staining. Perform high pressure antigen retrieval with 0.01 M citrate buffer (pH 6.0) prior to IF staining.

Immunofluorescence analysis of mouse lung tissue using Icam1 Rabbit polyclonal antibody (STJ11105185) at a dilution of 1:100 (40x lens). Secondary antibody: Cy3 Goat Anti-Rabbit IgG (H+L) at 1:500 dilution. Blue: DAPI for nuclear staining. Perform high pressure antigen retrieval with 0.01 M citrate buffer (pH 6.0) prior to IF staining.



Western blot analysis of various lysates, using Icam1 Rabbit polyclonal antibody (STJ11105185) at 1:1000 dilution. Secondary antibody: HRP Goat Anti-Rabbit IgG (H+L) (STJ5000856) at 1:10000 dilution. Lysates/proteins: 25ug per lane. Blocking buffer: 3% nonfat dry milk in TBST. Detection: ECL Basic Kit. Exposure time: 20s.

This product is suitable for in-vitro studies under the RESEARCH USE ONLY [RUO] licence. This product must not be used as for diagnostic or other medical purposes.
St John's Laboratory Ltd, Knowledge Dock Business Centre, University Way, London, E16 2RD | Tel: 0208 223 3081