

# Anti-ABCD1 antibody (650-745) [S5156RM] (STJ11105156)

STJ11105156

## GENERAL INFORMATION

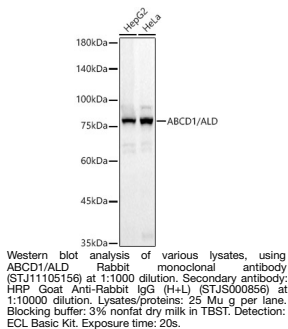
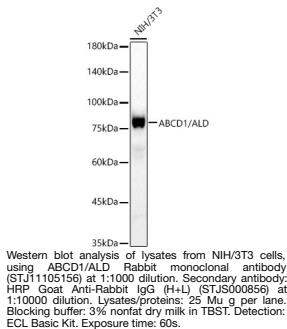
|                          |                    |
|--------------------------|--------------------|
| <b>Product Type</b>      | Primary antibodies |
| <b>Short Description</b> |                    |
| <b>Applications</b>      | WB/ELISA           |
| <b>Host/Source</b>       | Rabbit             |
| <b>Reactivity</b>        | Human/Mouse/Rat    |

## PRODUCT PROPERTIES

|                            |  |
|----------------------------|--|
| <b>Clonality</b>           | Monoclonal   |
| <b>Clone ID</b>            | S5156RM  |
| <b>Concentration</b>       | Lot specific   |
| <b>Conjugation</b>         | Unconjugated   |
| <b>Purification</b>        | Affinity purification  |
| <b>Dilution Range</b>      | WB:1:500-1:1000<br>ELISA:Recommended starting concentration is 1 Mu g/mL. Please optimize the concentration based on your specific assay requirements. |
| <b>Formulation</b>         | PBS with 0.02% Sodium Azide, 0.05% BSA, 50% Glycerol, pH 7.3.  |
| <b>Isotype</b>             | IgG  |
| <b>Storage Instruction</b> | Store at -20°C for up to 1 year from the date of receipt, and avoid repeat freeze-thaw cycles.   |

## TARGET INFORMATION

|                           |   |
|---------------------------|---|
| <b>Gene ID</b>            | 215   |
| <b>Gene Symbol</b>        | ABCD1   |
| <b>Uniprot ID</b>         | ABCD1_HUMAN   |
| <b>Immunogen</b>          |   |
| <b>Immunogen Region</b>   | 650-745   |
| <b>Specificity</b>        | Recombinant fusion protein containing a sequence corresponding to amino acids 650-745 of human ABCD1/ALD (NP_000024.2). |
| <b>Immunogen Sequence</b> | AGIALLSITHRPSLWKYHTH LLQFDGEGGWKFEKLDLSAAR LSLTEEKQRLEQQLAGIPKM QRRLQELCQILGEAVAPAHV<br>PAPSPQGPGGLQGAST                |



This product is suitable for in-vitro studies under the RESEARCH USE ONLY [RUO] licence. This product must not be used as for diagnostic or other medical purposes.  
St John's Laboratory Ltd, Knowledge Dock Business Centre, University Way, London, E16 2RD | Tel: 0208 223 3081