

Anti-JPT1 antibody (50-154) [S5147RM] (STJ11105147)

STJ11105147

GENERAL INFORMATION

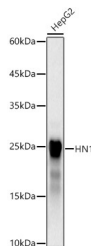
Product Type	Primary antibodies
Short Description	
Applications	WB/ELISA
Host/Source	Rabbit
Reactivity	Human/Mouse

PRODUCT PROPERTIES

Clonality	Monoclonal
Clone ID	S5147RM
Concentration	Lot specific
Conjugation	Unconjugated
Purification	Affinity purification
Dilution Range	WB:1:200-1:500 ELISA:Recommended starting concentration is 1 Mu g/mL. Please optimize the concentration based on your specific assay requirements.
Formulation	PBS with 0.02% Sodium Azide, 0.05% BSA, 50% Glycerol, pH 7.3.
Isotype	IgG
Storage	Store at -20°C for up to 1 year from the date of receipt, and avoid repeat freeze-thaw cycles.
Instruction	

TARGET INFORMATION

Gene ID	51155
Gene Symbol	JPT1
Uniprot ID	JUPI1_HUMAN
Immunogen	
Region	50-154
Specificity	Recombinant fusion protein containing a sequence corresponding to amino acids 50-154 of human HN1 (NP_057269.1).
Immunogen Sequence	NIFGTPEENQASWAKSAGAK SSGGREDLESSGLQRRNSSE ASSGDFLDLKGECDIHENVDTLPGSLGQSEKPVPAAPV PSPVAPAPVPSRRNPPGGKS SLVLG



Western blot analysis of lysates from HepG2 cells, using HN1 Rabbit monoclonal antibody (STJ11105147) at 1:500 dilution. Secondary antibody: HRP Goat Anti-Rabbit IgG (H+L) (STJS000856) at 1:10000 dilution. Lysates/proteins: 25 Mu g per lane. Blocking buffer: 3% nonfat dry milk in TBST. Detection: ECL Basic Kit. Exposure time: 30s.

This product is suitable for in-vitro studies under the RESEARCH USE ONLY [RUO] licence. This product must not be used as for diagnostic or other medical purposes.
St John's Laboratory Ltd, Knowledge Dock Business Centre, University Way, London, E16 2RD | Tel: 0208 223 3081