

Anti-GPX1 antibody (103-203 aa) [S5137RM] (STJ11105137)
STJ11105137

GENERAL INFORMATION

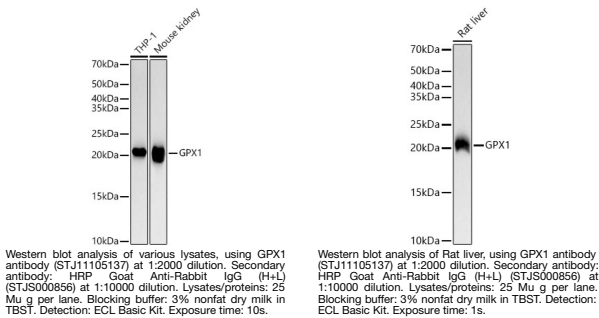
Product Type	Primary antibodies
Short Description	
Applications	WB/IHC/ELISA
Host/Source	Rabbit
Reactivity	Human/Mouse/Rat

PRODUCT PROPERTIES

Clonality	Monoclonal
Clone ID	S5137RM
Concentration	Lot specific
Conjugation	Unconjugated
Purification	Affinity purification
Dilution Range	WB:1:12000-1:72000 IHC:1:50-200 ELISA:Recommended starting concentration is 1 Mu g/mL. Please optimize the concentration based on your specific assay requirements.
Formulation	PBS with 0.05% Proclin300, 0.05% BSA, 50% Glycerol, pH 7.3.
Isotype	IgG
Storage Instruction	Store at -20°C for up to 1 year from the date of receipt, and avoid repeat freeze-thaw cycles.

TARGET INFORMATION

Gene ID	2876
Gene Symbol	GPX1
Uniprot ID	GPX1_HUMAN
Immunogen	
Immunogen Region	103-203 aa
Specificity	Recombinant fusion protein containing a sequence corresponding to amino acids 103-203 of human GPX1. (NP_000572.2).
Immunogen Sequence	GGFEPNFMFLFEKCEVNGAGA HPLFAFLREALPAPSDDATA LMTDPKLTWSPVCRNDVAW NFEKFLVGPDGVPLRRYSRR FQTIDIEPDIEALLSQGPSC A



This product is suitable for in-vitro studies under the RESEARCH USE ONLY [RUO] licence. This product must not be used as for diagnostic or other medical purposes.
St John's Laboratory Ltd, Knowledge Dock Business Centre, University Way, London, E16 2RD | Tel: 0208 223 3081