

Anti-MMP2 antibody (451-660) [S5128RM] (STJ11105128)

STJ11105128

GENERAL INFORMATION

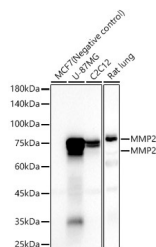
Product Type	Primary antibodies
Short Description	
Applications	WB/ELISA
Host/Source	Rabbit
Reactivity	Human/Mouse/Rat

PRODUCT PROPERTIES

Clonality	Monoclonal
Clone ID	S5128RM
Concentration	Lot specific
Conjugation	Unconjugated
Purification	Affinity purification
Dilution	WB:1:1000-1:2000
Range	ELISA:Recommended starting concentration is 1 µg/mL. Please optimize the concentration based on your specific assay requirements.
Formulation	PBS with 0.05% Proclin300, 0.05% BSA, 50% Glycerol, pH 7.3.
Isotype	IgG
Storage	Store at -20°C for up to 1 year from the date of receipt, and avoid repeat freeze-thaw cycles.
Instruction	

TARGET INFORMATION

Gene ID	4313
Gene Symbol	MMP2
Uniprot ID	MMP2_HUMAN
Immunogen	
Immunogen Region	451-660
Specificity	Recombinant fusion protein containing a sequence corresponding to amino acids 451-660 of human MMP2 (NP_004521.1). IDLTGTGPTPTLGPVTPEICK QDIVFDGIAQIRGEIFFKDFIWRVTVPDQKPMGPLLVA TFWPELPEKIDAVYEAPQEE
Immunogen Sequence	KAVFFAGNEYWIYSASTLER GYPKPLTSLGLPPDVQRVDA AFNWSKNKKTYIFAGDKFWR YNEVKKKMDPGFPKLIADAW NAIPDNLDAVVDLQGGGHSY FFKGAYYKLENQSLKSVKF GSIKSDWLGC



Western blot analysis of various lysates, using MMP2 Rabbit monoclonal antibody (STJ11105128) at 1:1000 dilution. Secondary antibody: HRP Goat Anti-Rabbit IgG (H+L) (STJS000856) at 1:10000 dilution. Lysates/proteins: 25 µg per lane. Blocking buffer: 3% nonfat dry milk in TBST. Detection: ECL Basic Kit. Exposure time: 60s.

This product is suitable for in-vitro studies under the RESEARCH USE ONLY [RUO] licence. This product must not be used as for diagnostic or other medical purposes.
St John's Laboratory Ltd, Knowledge Dock Business Centre, University Way, London, E16 2RD | Tel: 0208 223 3081