

Anti-SOX1 antibody (1-100 aa) [S5115RM] (STJ11105115)

STJ11105115

GENERAL INFORMATION

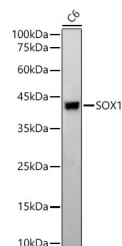
Product Type	Primary antibodies
Short Description	
Applications	WB/ELISA
Host/Source	Rabbit
Reactivity	Human/Mouse/Rat

PRODUCT PROPERTIES

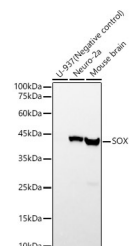
Clonality	Monoclonal
Clone ID	S5115RM
Concentration	Lot specific
Conjugation	Unconjugated
Purification	Affinity purification
Dilution Range	WB:1:500-1:2000 ELISA:Recommended starting concentration is 1 Mu g/mL. Please optimize the concentration based on your specific assay requirements.
Formulation	PBS with 0.05% Proclin300, 0.05% BSA, 50% Glycerol, pH 7.3.
Isotype	IgG
Storage	Store at -20°C for up to 1 year from the date of receipt, and avoid repeat freeze-thaw cycles.
Instruction	

TARGET INFORMATION

Gene ID	6656
Gene Symbol	SOX1
Uniprot ID	SOX1_HUMAN
Immunogen	
Region	1-100 aa
Specificity	Recombinant fusion protein containing a sequence corresponding to amino acids 1-100 of human SOX1. (NP_005977.2).
Immunogen Sequence	MYSMMMETDLHSPGGAQAPT NLSGPAGAGGGGGGGGGGG GGGAKANQDRVKRPMAFMV WSRGQRRKMAQENPKMHNSE ISKRLGAEWKMSEAEKRPF



Western blot analysis of lysates from C6 cells, using SOX1 Rabbit monoclonal antibody (STJ11105115) at 1:2000 dilution. Secondary antibody: HRP Goat Anti-Rabbit IgG (H+L) (STJ5000856) at 1:10000 dilution. Lysates/proteins: 25 Mu g per lane. Blocking buffer: 3% nonfat dry milk in TBST. Detection: ECL Basic Kit. Exposure time: 180s.



Western blot analysis of various lysates, using SOX1 Rabbit monoclonal antibody (STJ11105115) at 1:2000 dilution. Secondary antibody: HRP Goat Anti-Rabbit IgG (H+L) (STJ5000856) at 1:10000 dilution. Lysates/proteins: 25 Mu g per lane. Blocking buffer: 3% nonfat dry milk in TBST. Detection: ECL Basic Kit. Exposure time: 10s.

This product is suitable for in-vitro studies under the RESEARCH USE ONLY [RUO] licence. This product must not be used as for diagnostic or other medical purposes.
St John's Laboratory Ltd, Knowledge Dock Business Centre, University Way, London, E16 2RD | Tel: 0208 223 3081