

Anti-TREM2 antibody (19-174 aa) [S5108RM] (STJ11105108)

STJ11105108

GENERAL INFORMATION

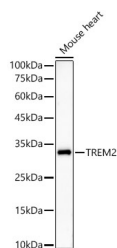
Product Type	Primary antibodies
Short Description	
Applications	WB/ELISA
Host/Source	Rabbit
Reactivity	Mouse

PRODUCT PROPERTIES

Clonality	Monoclonal
Clone ID	S5108RM
Concentration	Lot specific
Conjugation	Unconjugated
Purification	Affinity purification
Dilution	WB: 1:500-1:1000
Range	ELISA: Recommended starting concentration is 1 µg/mL. Please optimize the concentration based on your specific assay requirements.
Formulation	PBS with 0.05% Proclin300, 0.05% BSA, 50% Glycerol, pH 7.3.
Isotype	IgG
Storage Instruction	Store at -20°C for up to 1 year from the date of receipt, and avoid repeat freeze-thaw cycles.

TARGET INFORMATION

Gene ID	54209
Gene Symbol	TREM2
Uniprot ID	TREM2_HUMAN
Immunogen	
Immunogen Region	19-174 aa
Specificity	Recombinant fusion protein containing a sequence corresponding to amino acids 19-174 of human TREM2. (NP_061838.1). HNTTVFQGVAGQSLQVSCP Y DSMKHWGRRKAWCROLGEGK PCQRVSTHNLWLLSFLRRW NGSTAITDDTLGGTLTITLR
Immunogen Sequence	NLQPHDAGLYQCQSLHGSEA DTLRKVLVEVLADPLDHRDA GDLWFPGESESFEDAHVEHS ISRSLLGEIIPFPPTS



Western blot analysis of lysates from Mouse heart, using TREM2 Rabbit monoclonal antibody (STJ11105108) at 1:8000 dilution. Secondary antibody: HRP-Goat Anti-Rabbit IgG (H+L) (STJ5000856) at 1:10000 dilution. Lysates/proteins: 25 µg per lane. Blocking buffer: 3% nonfat dry milk in TBST. Detection: ECL Enhanced Kit. Exposure time: 180s.

This product is suitable for in-vitro studies under the RESEARCH USE ONLY [RUO] licence. This product must not be used as for diagnostic or other medical purposes.
St John's Laboratory Ltd, Knowledge Dock Business Centre, University Way, London, E16 2RD | Tel: 0208 223 3081