

## Anti-CASP1 antibody (200-300) [S5107RM] (STJ11105107)

STJ11105107

### GENERAL INFORMATION

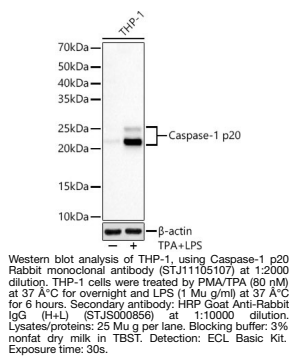
<b>Product Type</b>	Primary antibodies
<b>Short Description</b>	
<b>Applications</b>	WB/ELISA
<b>Host/Source</b>	Rabbit
<b>Reactivity</b>	Human

### PRODUCT PROPERTIES

<b>Clonality</b>	Monoclonal
<b>Clone ID</b>	S5107RM
<b>Concentration</b>	Lot specific
<b>Conjugation</b>	Unconjugated
<b>Purification</b>	Affinity purification
<b>Dilution Range</b>	WB:1:2000-1:8000 ELISA:Recommended starting concentration is 1 Mu g/mL. Please optimize the concentration based on your specific assay requirements.
<b>Formulation</b>	PBS with 0.05% Proclin300, 0.05% BSA, 50% Glycerol, pH 7.3.
<b>Isotype</b>	IgG
<b>Storage Instruction</b>	Store at -20°C for up to 1 year from the date of receipt, and avoid repeat freeze-thaw cycles.

### TARGET INFORMATION

<b>Gene ID</b>	834
<b>Gene Symbol</b>	CASP1
<b>Uniprot ID</b>	CASP1_HUMAN
<b>Immunogen</b>	
<b>Immunogen</b>	200-300
<b>Region</b>	
<b>Specificity</b>	A synthetic peptide corresponding to a sequence within amino acids 200-300 of human Caspase-1 p20 (NP_001244047.1).
<b>Immunogen</b>	DVKKNLTASDMTTELEAFAH RPEHKTSDFLVFMSHGIR EGICGKKHSEQVPDILQLNA IFNMLNTKNCPSLKDKPKVI
<b>Sequence</b>	IIQACRGDSPGVVWFKDSVG



This product is suitable for in-vitro studies under the RESEARCH USE ONLY [RUO] licence. This product must not be used as for diagnostic or other medical purposes.  
St John's Laboratory Ltd, Knowledge Dock Business Centre, University Way, London, E16 2RD | Tel: 0208 223 3081