

Anti-CDK5R1 antibody (200-300 aa) [S5105RM] (STJ11105105)

STJ11105105

GENERAL INFORMATION

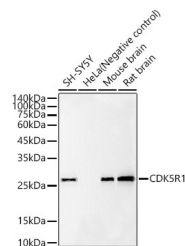
Product Type	Primary antibodies
Short Description	
Applications	WB/ELISA
Host/Source	Rabbit
Reactivity	Human/Mouse/Rat

PRODUCT PROPERTIES

Clonality	Monoclonal
Clone ID	S5105RM
Concentration	Lot specific
Conjugation	Unconjugated
Purification	Affinity purification
Dilution Range	WB:1:2000-1:4000 ELISA:Recommended starting concentration is 1 Mu g/mL. Please optimize the concentration based on your specific assay requirements.
Formulation	PBS with 0.05% Proclin300, 0.05% BSA, 50% Glycerol, pH 7.3.
Isotype	IgG
Storage	Store at -20°C for up to 1 year from the date of receipt, and avoid repeat freeze-thaw cycles.
Instruction	

TARGET INFORMATION

Gene ID	8851
Gene Symbol	CDK5R1
Uniprot ID	CD5R1_HUMAN
Immunogen	
Immunogen	200-300 aa
Region	
Specificity	A synthetic peptide corresponding to a sequence within amino acids 200-300 of human CDK5R1. (NP_003876.1).
Immunogen	NVVFLYMLCRDVISSEVGSD HELQAVLLTCLYLSYSYMGN EISYPLKPFLVESCKEAFWD RCLSVINLMSSKMLQINADP
Sequence	HYFTQVFSDLKNESGQEDKK R



Western blot analysis of various lysates, using CDK5R1 Rabbit monoclonal antibody (STJ11105105) at 1:5000 dilution. Secondary antibody: HRP Goat Anti-Rabbit IgG (H+L) (STJ5000856) at 1:10000 dilution. Lysates/proteins: 25 Mu g per lane. Blocking buffer: 3% nonfat dry milk in TBST. Detection: ECL Basic Kit. Exposure time: 30s.

This product is suitable for in-vitro studies under the RESEARCH USE ONLY [RUO] licence. This product must not be used as for diagnostic or other medical purposes.
St John's Laboratory Ltd, Knowledge Dock Business Centre, University Way, London, E16 2RD | Tel: 0208 223 3081