

Anti-IL1Beta antibody (118-269) [S5100RM] (STJ11105100)

STJ11105100

GENERAL INFORMATION

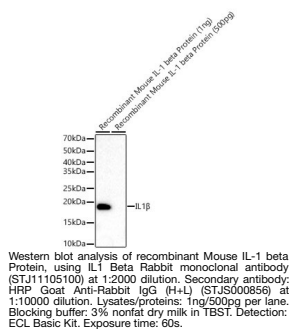
Product Type	Primary antibodies
Short Description	
Applications	WB/ELISA
Host/Source	Rabbit
Reactivity	Mouse

PRODUCT PROPERTIES

Clonality	Monoclonal
Clone ID	S5100RM
Concentration	Lot specific
Conjugation	Unconjugated
Purification	Affinity purification
Dilution	WB:1:1000-1:5000
Range	ELISA:Recommended starting concentration is 1 Mu g/mL. Please optimize the concentration based on your specific assay requirements.
Formulation	PBS with 0.05% Proclin300, 0.05% BSA, 50% Glycerol, pH 7.3.
Isotype	IgG
Storage	Store at -20°C for up to 1 year from the date of receipt, and avoid repeat freeze-thaw cycles.
Instruction	

TARGET INFORMATION

Gene ID	16176
Gene Symbol	Il1b
Uniprot ID	IL1B_MOUSE
Immunogen	
Immunogen Region	118-269
Specificity	Recombinant fusion protein containing a sequence corresponding to amino acids 118-269 of mouse IL1 Beta (NP_032387.1).
Immunogen Sequence	VPIRQLHYRLRDEQQKSLVL SDPYELKALHLNGQINQQV IFSMSFVQGEPNSNDKIPVAL GLKGKNLYLSCVMKDGTPTL QLESVDPKQYPKKKMEKRFV FNKIEVKSKEFESAEFPNW YISTSQAEHKPVFLGNNSGQ DIIDFTMESVSS



This product is suitable for in-vitro studies under the RESEARCH USE ONLY [RUO] licence. This product must not be used as for diagnostic or other medical purposes.
St John's Laboratory Ltd, Knowledge Dock Business Centre, University Way, London, E16 2RD | Tel: 0208 223 3081