

Anti-MDM2 antibody (101-200) [S5096RM] (STJ11105096)

STJ11105096

GENERAL INFORMATION

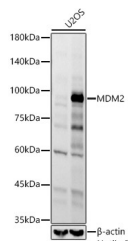
Product Type	Primary antibodies
Short Description	
Applications	WB/ELISA
Host/Source	Rabbit
Reactivity	Human

PRODUCT PROPERTIES

Clonality	Monoclonal
Clone ID	S5096RM
Concentration	Lot specific
Conjugation	Unconjugated
Purification	Affinity purification
Dilution Range	WB:1:1000-1:2000 ELISA:Recommended starting concentration is 1 Mu g/mL. Please optimize the concentration based on your specific assay requirements.
Formulation	PBS with 0.05% Proclin300, 0.05% BSA, 50% Glycerol, pH 7.3.
Isotype	IgG
Storage Instruction	Store at -20°C for up to 1 year from the date of receipt, and avoid repeat freeze-thaw cycles.

TARGET INFORMATION

Gene ID	4193
Gene Symbol	MDM2
Uniprot ID	MDM2_HUMAN
Immunogen	
Immunogen Region	101-200
Specificity	A synthetic peptide corresponding to a sequence within amino acids 101-200 of human MDM2 (NP_001354919.1).
Immunogen Sequence	TMIVRNLVVVNQESSDSGT SVSENRCHEGGSDQKDLVQ ELQEEKPSSSHLVSRPSTSS RRAISETEENSDELSEGERQ RKRIKSDSISLSESLALC



Western blot analysis of lysates from U2OS cells, using MDM2 Rabbit monoclonal antibody (STJ11105096) at 1:2000 dilution. U2OS cells were treated by Nutlin 3a (10 Mu M) at 37 °C for 24 hours. Secondary antibody: HRP Goat Anti-Rabbit IgG (H+L) (STJS000856) at 1:10000 dilution. Lysates/proteins: 25 Mu g per lane. Blocking buffer: 3% nonfat dry milk in TBST. Detection: ECL Basic Kit. Exposure time: 90s.

This product is suitable for in-vitro studies under the RESEARCH USE ONLY [RUO] licence. This product must not be used as for diagnostic or other medical purposes.
St John's Laboratory Ltd, Knowledge Dock Business Centre, University Way, London, E16 2RD | Tel: 0208 223 3081