

Anti-MDM2 antibody (101-200) [S5095RM] (STJ11105095)

STJ11105095

GENERAL INFORMATION

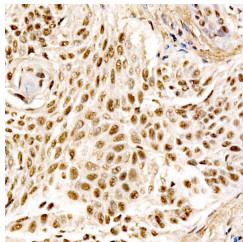
Product Type	Primary antibodies
Short Description	
Applications	IHC-P/ELISA
Host/Source	Rabbit
Reactivity	Human

PRODUCT PROPERTIES

Clonality	Monoclonal
Clone ID	S5095RM
Concentration	Lot specific
Conjugation	Unconjugated
Purification	Affinity purification
Dilution Range	IHC-P:1:50-1:200 ELISA:Recommended starting concentration is 1 µg/mL. Please optimize the concentration based on your specific assay requirements.
Formulation	PBS with 0.05% Proclin300, 0.05% BSA, 50% Glycerol, pH 7.3.
Isotype	IgG
Storage Instruction	Store at -20°C for up to 1 year from the date of receipt, and avoid repeat freeze-thaw cycles.

TARGET INFORMATION

Gene ID	4193
Gene Symbol	MDM2
Uniprot ID	MDM2_HUMAN
Immunogen	
Immunogen Region	101-200
Specificity	A synthetic peptide corresponding to a sequence within amino acids 101-200 of human MDM2 (NP_001354919.1).
Immunogen Sequence	TMIVRNLVVVNQESSDGT SVSENRCHEGGSDQKDLVQ ELQEEKPSSSHLVSRPSTSS RRAISETEENSDELSGERQ RKRIKSDSISLFSFDESLALC



Immunohistochemistry analysis of MDM2 in paraffin-embedded human lung squamous carcinoma tissue using MDM2 Rabbit monoclonal antibody (STJ11105095) at dilution of 1:100 (40x lens). Perform high pressure antigen retrieval with 10 mM citrate buffer pH 6.0 before commencing with immunohistochemistry staining protocol.

This product is suitable for in-vitro studies under the RESEARCH USE ONLY [RUO] licence. This product must not be used as for diagnostic or other medical purposes.
St John's Laboratory Ltd, Knowledge Dock Business Centre, University Way, London, E16 2RD | Tel: 0208 223 3081