

Anti-SOAT1 antibody (1-104 aa) [S5084RM] (STJ11105084)

STJ11105084

GENERAL INFORMATION

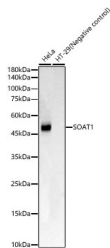
| | |
|--------------------------|--------------------|
| Product Type | Primary antibodies |
| Short Description | |
| Applications | WB/ELISA |
| Host/Source | Rabbit |
| Reactivity | Human |

PRODUCT PROPERTIES

| | |
|-----------------------|--|
| Clonality | Monoclonal |
| Clone ID | S5084RM |
| Concentration | Lot specific |
| Conjugation | Unconjugated |
| Purification | Affinity purification |
| Dilution Range | WB:1:500-1:1000 ELISA:Recommended starting concentration is 1 Mu g/mL. Please optimize the concentration based on your specific assay requirements. |
| Formulation | PBS with 0.05% Proclin300, 0.05% BSA, 50% Glycerol, pH 7.3. |
| Isotype | IgG |
| Storage | Store at -20°C for up to 1 year from the date of receipt, and avoid repeat freeze-thaw cycles. |
| Instruction | |

TARGET INFORMATION

| | |
|---------------------------|--|
| Gene ID | 6646 |
| Gene Symbol | SOAT1 |
| Uniprot ID | SOAT1_HUMAN |
| Immunogen | |
| Region | 1-104 aa |
| Specificity | Recombinant fusion protein containing a sequence corresponding to amino acids 1-104 of human SOAT1. (NP_003092.4). |
| Immunogen Sequence | <p> MVGEEEKMSLRNRLSKSRENP EEDEDQRNPAKESLET PSNG RIDIKQLIAKKIKLTA EAEELKPF FMKEVGSHFDDFVTNL </p> <p> IEKSASLDNGGCALTTF SVLEGEK </p> |



Western blot analysis of various lysates, using SOAT1 Rabbit monoclonal antibody (STJ11105084) at 1:1000 dilution. Secondary antibody: HRP Goat Anti-Rabbit IgG (H+L) (STJ5000856) at 1:10000 dilution. Lysates/proteins: 25 Mu g per lane. Blocking buffer: 3% nonfat dry milk in TBST. Detection: ECL Basic Kit. Exposure time: 30s.

This product is suitable for in-vitro studies under the RESEARCH USE ONLY [RUO] licence. This product must not be used as for diagnostic or other medical purposes.
St John's Laboratory Ltd, Knowledge Dock Business Centre, University Way, London, E16 2RD | Tel: 0208 223 3081