

Anti-Tgfb1 antibody (30-390 aa) (STJ11105074)

STJ11105074

GENERAL INFORMATION

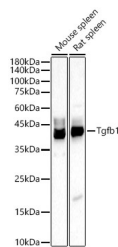
Product Type	Primary antibodies
Short Description	
Applications	WB/ELISA
Host/Source	Rabbit
Reactivity	Mouse/Rat

PRODUCT PROPERTIES

Clonality	Polyclonal
Clone ID	
Concentration	Lot specific
Conjugation	Unconjugated
Purification	Affinity purification
Dilution	WB:1:500-1:1000
Range	ELISA:Recommended starting concentration is 1 µg/mL. Please optimize the concentration based on your specific assay requirements.
Formulation	PBS with 0.05% Proclin300, 50% Glycerol, pH 7.3.
Isotype	IgG
Storage	Store at -20°C for up to 1 year from the date of receipt, and avoid repeat freeze-thaw cycles.
Instruction	

TARGET INFORMATION

Gene ID	21803
Gene Symbol	Tgfb1
Uniprot ID	TGFB1_MOUSE
Immunogen	
Immunogen Region	30-390 aa
Specificity	Recombinant fusion protein containing a sequence corresponding to amino acids 30-390 of mouse Tgfb1. (NP_035707.1). LSTCKTIDMELVKRKRIEAI RGQILSKLRLASPPSQGEVP PGPLPEAVLALYNSTRDRVA GESADPEPEPEADYYAKEVT
Immunogen Sequence	RVLMDVRNNAIYEKTKDISH SIYMFNTSDIREAVPEPPL LSRAELRLQLKSSVEQHVE LYQKYSNNSWRYLGNRLTPTDTPEWLSFDVTGVVRQWLN QGDGIQGRFRSAHCSDSKD NKLHVEINGISPKRRGDLGT IHDMNRPFLLLMATPLERA



Western blot analysis of various lysates, using Tgfb1 Rabbit polyclonal antibody (STJ11105074) at 1:2500 dilution. Secondary antibody: HRP Goat Anti-Rabbit IgG (H+L) (STJS000856) at 1:10000 dilution. Lysates/proteins: 25 µg per lane. Blocking buffer: 3% nonfat dry milk in TBST. Detection: ECL Basic Kit. Exposure time: 60s.

This product is suitable for in-vitro studies under the RESEARCH USE ONLY [RUO] licence. This product must not be used as for diagnostic or other medical purposes.
St John's Laboratory Ltd, Knowledge Dock Business Centre, University Way, London, E16 2RD | Tel: 0208 223 3081