

Anti-VHL antibody (100-200 aa) [S5058RM] (STJ11105058)

STJ11105058

GENERAL INFORMATION

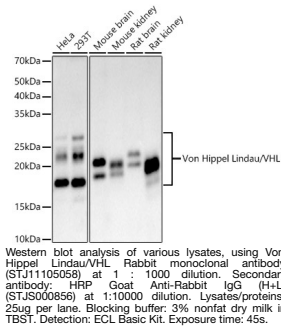
| | |
|--------------------------|--------------------|
| Product Type | Primary antibodies |
| Short Description | |
| Applications | WB/ELISA |
| Host/Source | Rabbit |
| Reactivity | Human/Mouse/Rat |

PRODUCT PROPERTIES

| | |
|----------------------------|--|
| Clonality | Monoclonal |
| Clone ID | S5058RM |
| Concentration | Lot specific |
| Conjugation | Unconjugated |
| Purification | Affinity purification |
| Dilution Range | WB:1:500-1:1000 ELISA:Recommended starting concentration is 1 Mu g/mL. Please optimize the concentration based on your specific assay requirements. |
| Formulation | PBS with 0.05% Proclin300, 0.05% BSA, 50% Glycerol, pH 7.3. |
| Isotype | IgG |
| Storage Instruction | Store at -20°C for up to 1 year from the date of receipt, and avoid repeat freeze-thaw cycles. |

TARGET INFORMATION

| | |
|--------------------|--|
| Gene ID | 7428 |
| Gene Symbol | VHL |
| Uniprot ID | VHL_HUMAN |
| Immunogen | |
| Immunogen | 100-200 aa |
| Region | |
| Specificity | Recombinant fusion protein containing a sequence corresponding to amino acids 100-200 of human Von Hippel Lindau/VHL. (NP_000542.1). |
| Immunogen | TLPPGTGRRHHSYRGHLWLF RDAGTHDGLLVNQTELVPS LNVGQPIFANITLPVYTLK ERCLQVRSLVKPENYRRLD |
| Sequence | IVRSLYEDLEDHPNVQKDLE R |



This product is suitable for in-vitro studies under the RESEARCH USE ONLY [RUO] licence. This product must not be used as for diagnostic or other medical purposes.
St John's Laboratory Ltd, Knowledge Dock Business Centre, University Way, London, E16 2RD | Tel: 0208 223 3081