

Anti-RIGI antibody (241-455) [S5039RM] (STJ11105039)

STJ11105039

GENERAL INFORMATION

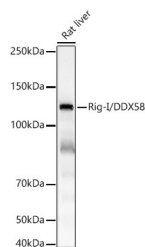
Product Type	Primary antibodies
Short Description	
Applications	WB/ELISA
Host/Source	Rabbit
Reactivity	Human/Rat

PRODUCT PROPERTIES

Clonality	Monoclonal
Clone ID	S5039RM
Concentration	Lot specific
Conjugation	Unconjugated
Purification	Affinity purification
Dilution	WB:1:2000-1:4000
Range	ELISA:Recommended starting concentration is 1 Mu g/mL. Please optimize the concentration based on your specific assay requirements.
Formulation	PBS with 0.05% Proclin300, 0.05% BSA, 50% Glycerol, pH 7.3.
Isotype	IgG
Storage	Store at -20°C for up to 1 year from the date of receipt, and avoid repeat freeze-thaw cycles.
Instruction	

TARGET INFORMATION

Gene ID	23586
Gene Symbol	RIGI
Uniprot ID	RIGI_HUMAN
Immunogen	
Immunogen Region	241-455
Specificity	Recombinant fusion protein containing a sequence corresponding to amino acids 241-455 of human RIG-I/DDX58 (NP_055129.2).
Immunogen Sequence	FKPRNYQLELALPAMKGKNT IICAPTGCCKTFVSLICEH HLKFFPQGQKGVVFFANQI PVYEQQKSVFSKYFERHGYR VTGISGATAENVPVEQIVEN NDIILTPQILVNNLKKGTI PLSIIFLMIFDECHNTSKQ HPYNMIMFNFLDQKLGGSSG PLPQVIGLTASVGVGDAKNT DEALDYICKLCASLDASVIA TVKHNLLEELEQVYVK



Western blot analysis of extracts from rat liver, using RIG-I/DDX58 antibody. Rabbit monoclonal antibody (STJ11105039) at 1:4000 dilution. Secondary antibody: HRP Goat Anti-Rabbit IgG (H+L) (STJ5000856) at 1:10000 dilution. Lysates/proteins: 25 Mu g per lane. Blocking buffer: 3% nonfat dry milk in TBST. Detection: ECL Basic Kit. Exposure time: 10s.

This product is suitable for in-vitro studies under the RESEARCH USE ONLY [RUO] licence. This product must not be used as for diagnostic or other medical purposes.
St John's Laboratory Ltd, Knowledge Dock Business Centre, University Way, London, E16 2RD | Tel: 0208 223 3081