

Anti-BRD2 antibody (1-345) [S5037RM] (STJ11105037)

STJ11105037

GENERAL INFORMATION

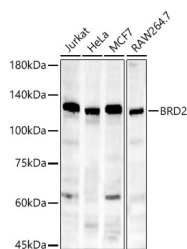
Product Type	Primary antibodies
Short Description	
Applications	WB/ELISA
Host/Source	Rabbit
Reactivity	Human/Mouse

PRODUCT PROPERTIES

Clonality	Monoclonal
Clone ID	S5037RM
Concentration	Lot specific
Conjugation	Unconjugated
Purification	Affinity purification
Dilution	WB:1:500-1:1000
Range	ELISA:Recommended starting concentration is 1 Mu g/mL. Please optimize the concentration based on your specific assay requirements.
Formulation	PBS with 0.05% Proclin300, 0.05% BSA, 50% Glycerol, pH 7.3.
Isotype	IgG
Storage	Store at -20°C for up to 1 year from the date of receipt, and avoid repeat freeze-thaw cycles.
Instruction	

TARGET INFORMATION

Gene ID	6046
Gene Symbol	BRD2
Uniprot ID	BRD2_HUMAN
Immunogen	
Immunogen Region	1-345
Specificity	Recombinant fusion protein containing a sequence corresponding to amino acids 1-345 of human BRD2 (NP_005095.1).
Immunogen Sequence	MLQNVTPHNKLPGEAGLL GLGPEAAAPGKRIRKPSLLY EGFESPTMASVPALQLTPAN PPPPEVSNPKKPGRVTNQLQ YLHKVVMKALWKHQAFAWPFQ QPVDVAVKGLPDYHKKIQP MDMGTIKRRLNNYYWAASE CMQDFNTMFTNCTYINNKPTD DIVLMAQTLEKIFLQKVASM PQEEQELVVTIPKNSHKKGA KLAALQGSVTSAHQVPVSS VSHTALYTPPPEIPTTVLN



Western blot analysis of various lysates, using BRD2 antibody (STJ11105037) at 1:1000 dilution. Secondary antibody: HRP Goat Anti-Rabbit IgG (H+L) (STJ5000856) at 1:10000 dilution. Lysates/proteins: 25 Mu g per lane. Blocking buffer: 3% nonfat dry milk in TBST. Detection: ECL Enhanced Kit. Exposure time: 180s.

This product is suitable for in-vitro studies under the RESEARCH USE ONLY [RUO] licence. This product must not be used as for diagnostic or other medical purposes.
St John's Laboratory Ltd, Knowledge Dock Business Centre, University Way, London, E16 2RD | Tel: 0208 223 3081