

Anti-Cleaved-CASP7 antibody (100-200) [S5032RM] (STJ11105032)

STJ11105032

GENERAL INFORMATION

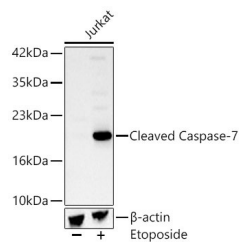
Product Type	Primary antibodies
Short Description	
Applications	WB/ELISA
Host/Source	Rabbit
Reactivity	Human

PRODUCT PROPERTIES

Clonality	Monoclonal
Clone ID	S5032RM
Concentration	Lot specific
Conjugation	Unconjugated
Purification	Affinity purification
Dilution Range	WB:1:1000-1:2000 ELISA:Recommended starting concentration is 1 Mu g/mL. Please optimize the concentration based on your specific assay requirements.
Formulation	PBS with 0.05% Proclin300, 0.05% BSA, 50% Glycerol, pH 7.3.
Isotype	IgG
Storage Instruction	Store at -20°C for up to 1 year from the date of receipt, and avoid repeat freeze-thaw cycles.

TARGET INFORMATION

Gene ID	840
Gene Symbol	CASP7
Uniprot ID	CASP7_HUMAN
Immunogen	
Immunogen Region	100-200
Specificity	A synthetic peptide corresponding to a sequence within amino acids 100-200 of human CASP7 (NP_001218.1).
Immunogen Sequence	CFRSLGFDVIVYNDSCAKM QDLLKKASEEDHTNAACFAC ILLSHGEENVYIGKDGVTPI KDLTAHFRGDRCKTLLEKPK LFFIQACRGTELDGQADS G



Western blot analysis of lysates from Jurkat cells using Cleaved Caspase-7 Rabbit monoclonal antibody (STJ11105032) at 1:1000 dilution. Jurkat cells were treated by Etoposide (25 uM) at 37 °C for 5 hours. Secondary antibody: HRP Goat Anti-Rabbit IgG (H+L) (STJ5000856) at 1:10000 dilution. Lysates/proteins: 25 Mu g per lane. Blocking buffer: 3% nonfat dry milk in TBST. Detection: ECL Basic Kit. Exposure time: 180s.

This product is suitable for in-vitro studies under the RESEARCH USE ONLY [RUO] licence. This product must not be used as for diagnostic or other medical purposes.
St John's Laboratory Ltd, Knowledge Dock Business Centre, University Way, London, E16 2RD | Tel: 0208 223 3081