

Anti-IFN gamma antibody (20-153) [S5031RM] (STJ11105031)
STJ11105031

GENERAL INFORMATION

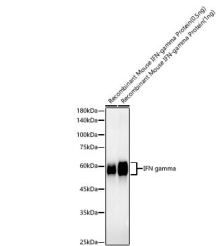
Product Type	Primary antibodies
Short Description	
Applications	WB/ELISA
Host/Source	Rabbit
Reactivity	Mouse/Rat

PRODUCT PROPERTIES

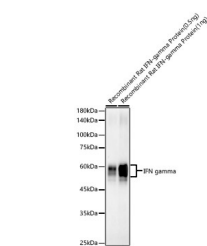
Clonality	Monoclonal
Clone ID	S5031RM
Concentration	Lot specific
Conjugation	Unconjugated
Purification	Affinity purification
Dilution Range	WB:1:500-1:1000 ELISA:Recommended starting concentration is 1 Mu g/mL. Please optimize the concentration based on your specific assay requirements.
Formulation	PBS with 0.05% Proclin300, 0.05% BSA, 50% Glycerol, pH 7.3.
Isotype	IgG
Storage Instruction	Store at -20°C for up to 1 year from the date of receipt, and avoid repeat freeze-thaw cycles.

TARGET INFORMATION

Gene ID	25712
Gene Symbol	Ifng
Uniprot ID	IFNG_RAT
Immunogen	
Immunogen Region	20-153
Specificity	Recombinant fusion protein containing a sequence corresponding to amino acids 20-153 of rat IFN gamma (NP_620235.1).
Immunogen Sequence	CYCQGTLIESLESKKNYFNS SMDAMEGKSLLLDIWRNWQ KDGNTKILESQIISFYLRLLF EVLKDQNQAISNNISVIESHL ITNFFSNSKAKKDAFMSIAK FEVNNPQIQHKAVNELIRVI HQLSPESSLRKRKR



Western blot analysis of Recombinant Mouse IFN-gamma Protein, using IFN gamma antibody (STJ11105031) at 1:1000 dilution. Secondary antibody: HRP Goat Anti-Rabbit IgG (H+L) (STJ5000856) at 1:10000 dilution. Lysates/proteins: 1ng/0.5ng per lane. Blocking buffer: 3% nonfat dry milk in TBST. Detection: ECL Basic Kit. Exposure time: 120s.



Western blot analysis of Recombinant Rat IFN-gamma Protein, using IFN gamma antibody (STJ11105031) at 1:1000 dilution. Secondary antibody: HRP Goat Anti-Rabbit IgG (H+L) (STJ5000856) at 1:10000 dilution. Lysates/proteins: 1ng/0.5ng per lane. Blocking buffer: 3% nonfat dry milk in TBST. Detection: ECL Basic Kit. Exposure time: 120s.

This product is suitable for in-vitro studies under the RESEARCH USE ONLY [RUO] licence. This product must not be used as for diagnostic or other medical purposes.
St John's Laboratory Ltd, Knowledge Dock Business Centre, University Way, London, E16 2RD | Tel: 0208 223 3081