

## Anti-ATP6 antibody (126-226 aa) [S5030RM] (STJ11105030)

STJ11105030

### GENERAL INFORMATION

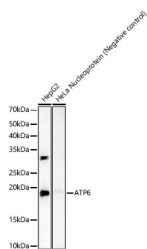
|                          |                    |
|--------------------------|--------------------|
| <b>Product Type</b>      | Primary antibodies |
| <b>Short Description</b> |                    |
| <b>Applications</b>      | WB/ELISA           |
| <b>Host/Source</b>       | Rabbit             |
| <b>Reactivity</b>        | Human              |

### PRODUCT PROPERTIES

|                            |                                                                                                                                                         |
|----------------------------|---------------------------------------------------------------------------------------------------------------------------------------------------------|
| <b>Clonality</b>           | Monoclonal                                                                                                                                              |
| <b>Clone ID</b>            | S5030RM                                                                                                                                                 |
| <b>Concentration</b>       | Lot specific                                                                                                                                            |
| <b>Conjugation</b>         | Unconjugated                                                                                                                                            |
| <b>Purification</b>        | Affinity purification                                                                                                                                   |
| <b>Dilution Range</b>      | WB:1:1000-1:5000<br>ELISA:Recommended starting concentration is 1 Mu g/mL. Please optimize the concentration based on your specific assay requirements. |
| <b>Formulation</b>         | PBS with 0.05% Proclin300, 0.05% BSA, 50% Glycerol, pH 7.3.                                                                                             |
| <b>Isotype</b>             | IgG                                                                                                                                                     |
| <b>Storage Instruction</b> | Store at -20°C for up to 1 year from the date of receipt, and avoid repeat freeze-thaw cycles.                                                          |

### TARGET INFORMATION

|                           |                                                                                                            |
|---------------------------|------------------------------------------------------------------------------------------------------------|
| <b>Gene ID</b>            | 17705                                                                                                      |
| <b>Gene Symbol</b>        | Mtatp6                                                                                                     |
| <b>Uniprot ID</b>         | ATP6_MOUSE                                                                                                 |
| <b>Immunogen</b>          |                                                                                                            |
| <b>Immunogen Region</b>   | 126-226 aa                                                                                                 |
| <b>Specificity</b>        | A synthetic peptide corresponding to a sequence within amino acids 126-226 of human ATP6. (NP_904333.1).   |
| <b>Immunogen Sequence</b> | AHFLPQGTPISLIPMLIIE TISLFIQPMALAVRLTANIT AGHLLMHLIGGATLVLMNIS PPTATITFIILLTILEFA<br>VALIQAYVFTLLVSLYLHDN T |



Western blot analysis of various lysates, using ATP6 antibody (STJ11105030) at 1:2000 dilution. Secondary antibody: HRP Goat Anti-Rabbit IgG (H+L) (STJS000856) at 1:10000 dilution. Lysates/proteins: 25 Mu g per lane. Blocking buffer: 3% nonfat dry milk in TBST. Detection: ECL Basic Kit. Exposure time: 90s.

This product is suitable for in-vitro studies under the RESEARCH USE ONLY [RUO] licence. This product must not be used as for diagnostic or other medical purposes.  
St John's Laboratory Ltd, Knowledge Dock Business Centre, University Way, London, E16 2RD | Tel: 0208 223 3081