

Anti-PLA2R1 antibody (810-910 aa) [S5029RM] (STJ11105029)

GENERAL INFORMATION

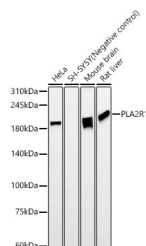
Product Type	Primary antibodies
Short Description	
Applications	WB/ELISA
Host/Source	Rabbit
Reactivity	Human/Mouse/Rat

PRODUCT PROPERTIES

Clonality	Monoclonal
Clone ID	S5029RM
Concentration	Lot specific
Conjugation	Unconjugated
Purification	Affinity purification
Dilution Range	WB:1:500-1:1000 ELISA:Recommended starting concentration is 1 Mu g/mL. Please optimize the concentration based on your specific assay requirements.
Formulation	PBS with 0.05% Proclin300, 0.05% BSA, 50% Glycerol, pH 7.3.
Isotype	IgG
Storage	Store at -20°C for up to 1 year from the date of receipt, and avoid repeat freeze-thaw cycles.
Instruction	

TARGET INFORMATION

Gene ID	22925
Gene Symbol	PLA2R1
Uniprot ID	PLA2R_HUMAN
Immunogen	
Region	810-910 aa
Specificity	Recombinant fusion protein containing a sequence corresponding to amino acids 810-910 of human PLA2R1. (NP_031392.3).
Immunogen	YQYDVPWLFYQDAEYLFHTF ASEWLNFEFVCSWLHSDLLT IHSHEQEFIHHSKIKALSKY GASWWIGLQEERANDEFWR
Sequence	DGTPVIYQNWDGTGRRTVNN Q



Western blot analysis of various lysates, using PLA2R1 antibody (STJ11105029) at 1:900 dilution. Secondary antibody: HRP Goat Anti-Rabbit IgG (H+L) (STJS000856) at 1:10000 dilution. Lysates/proteins: 25 Mu g per lane. Blocking buffer: 3% nonfat dry milk in TBST. Detection: ECL Basic Kit. Exposure time: 60s.

This product is suitable for in-vitro studies under the RESEARCH USE ONLY [RUO] licence. This product must not be used as for diagnostic or other medical purposes.
St John's Laboratory Ltd, Knowledge Dock Business Centre, University Way, London, E16 2RD | Tel: 0208 223 3081