

Anti-GJA1 antibody (300-382) [S5021RM] (STJ11105021)

STJ11105021

GENERAL INFORMATION

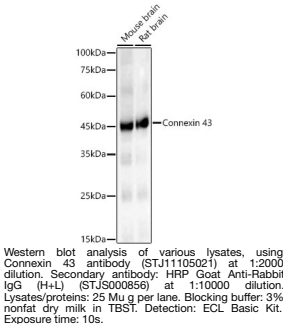
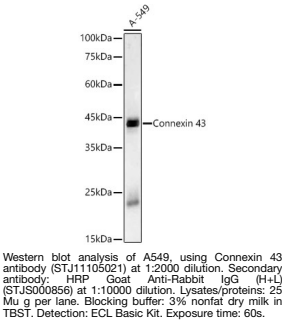
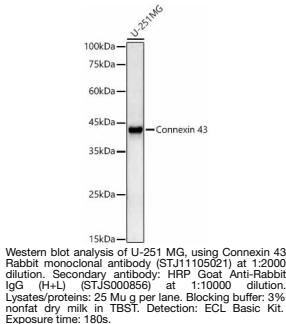
Product Type	Primary antibodies
Short Description	
Applications	WB/ELISA
Host/Source	Rabbit
Reactivity	Human/Mouse/Rat

PRODUCT PROPERTIES

Clonality	Monoclonal
Clone ID	S5021RM
Concentration	Lot specific
Conjugation	Unconjugated
Purification	Affinity purification
Dilution Range	WB:1:1000-1:12000 ELISA:Recommended starting concentration is 1 Mu g/mL. Please optimize the concentration based on your specific assay requirements.
Formulation	PBS with 0.05% Proclin300, 0.05% BSA, 50% Glycerol, pH 7.3.
Isotype	IgG
Storage Instruction	Store at -20°C for up to 1 year from the date of receipt, and avoid repeat freeze-thaw cycles.

TARGET INFORMATION

Gene ID	2697
Gene Symbol	GJA1
Uniprot ID	CXA1_HUMAN
Immunogen	
Immunogen Region	300-382
Specificity	A synthetic peptide corresponding to a sequence within amino acids 300-382 of human Connexin 43 (NP_000156.1).
Immunogen Sequence	NYNQKASEQNWANYSAEQNR MGQAGSTISNSHAQPFDFPD DNQNSKKLAAGHELQPLAIV DQRPSSRASSRASSRPRPDD LEI



This product is suitable for in-vitro studies under the RESEARCH USE ONLY [RUO] licence. This product must not be used as for diagnostic or other medical purposes.
St John's Laboratory Ltd, Knowledge Dock Business Centre, University Way, London, E16 2RD | Tel: 0208 223 3081