

Anti-SIRT5 antibody (37-310) [S5013RM] (STJ11105013)

STJ11105013

GENERAL INFORMATION

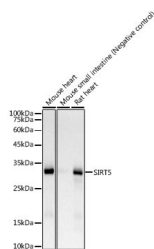
Product Type	Primary antibodies
Short Description	
Applications	WB/ELISA
Host/Source	Rabbit
Reactivity	Human/Mouse/Rat

PRODUCT PROPERTIES

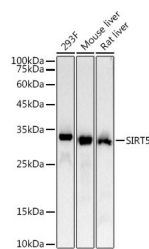
Clonality	Monoclonal
Clone ID	S5013RM
Concentration	Lot specific
Conjugation	Unconjugated
Purification	Affinity purification
Dilution	WB:1:1000-1:5000
Range	ELISA:Recommended starting concentration is 1 Mu g/mL. Please optimize the concentration based on your specific assay requirements.
Formulation	PBS with 0.05% Proclin300, 0.05% BSA, 50% Glycerol, pH 7.3.
Isotype	IgG
Storage	Store at -20°C for up to 1 year from the date of receipt, and avoid repeat freeze-thaw cycles.
Instruction	

TARGET INFORMATION

Gene ID	23408
Gene Symbol	SIRT5
Uniprot ID	SIR5_HUMAN
Immunogen	
Immunogen Region	37-310
Specificity	Recombinant fusion protein containing a sequence corresponding to amino acids 37-310 of human SIRT5 (NP_036373.1). SSSMADFRKFFAKAHVIV SGAGVSAESGVPTFRGAGGY WRKWQAQDLATPLAFHNPS RVWEFYHYRREVVMGSKEPNA GHRAIAECETRLGKQGRRVV VITQNIDELHRKAGTKNLL IHGSLFKTRCTSCGVVAENY KSPICPALSGKGAPEPGTQD ASIPVEKLPRCEEAGCGLL RPHVWWFGENLDPALIEVD RELAHCDLCLVGTSSVYYP AAMFAPQVAARGVPVAEFN
Sequence	



Western blot analysis of various lysates, using SIRT5 antibody (STJ11105013) at 1:3000 dilution. Secondary antibody: HRP Goat Anti-Rabbit IgG (H+L) (STJS000856) at 1:10000 dilution. Lysates/proteins: 25 Mu g per lane. Blocking buffer: 3% nonfat dry milk in TBST. Detection: ECL Basic Kit. Exposure time: 10s.



Western blot analysis of various lysates, using SIRT5 Rabbit monoclonal antibody (STJ11105013) at 1:3000 dilution. Secondary antibody: HRP Goat Anti-Rabbit IgG (H+L) (STJS000856) at 1:10000 dilution. Lysates/proteins: 25 Mu g per lane. Blocking buffer: 3% nonfat dry milk in TBST. Detection: ECL Basic Kit. Exposure time: 30s.