

Anti-LOXL1 antibody (95-370 aa) [S5012RM] (STJ11105012)

STJ11105012

GENERAL INFORMATION

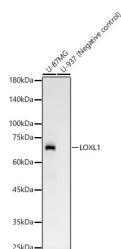
Product Type	Primary antibodies
Short Description	
Applications	WB/ELISA
Host/Source	Rabbit
Reactivity	Human

PRODUCT PROPERTIES

Clonality	Monoclonal
Clone ID	S5012RM
Concentration	Lot specific
Conjugation	Unconjugated
Purification	Affinity purification
Dilution	WB:1:500-1:1000
Range	ELISA:Recommended starting concentration is 1 Mu g/mL. Please optimize the concentration based on your specific assay requirements.
Formulation	PBS with 0.05% Proclin300, 0.05% BSA, 50% Glycerol, pH 7.3.
Isotype	IgG
Storage	Store at -20°C for up to 1 year from the date of receipt, and avoid repeat freeze-thaw cycles.
Instruction	

TARGET INFORMATION

Gene ID	4016
Gene Symbol	LOXL1
Uniprot ID	LOXL1_HUMAN
Immunogen	
Immunogen Region	95-370 aa
Specificity	Recombinant fusion protein containing a sequence corresponding to amino acids 95-370 of human LOXL1. (NP_005567.2).
Immunogen Sequence	RQAPSLPLPGRVGS DTVRGQ ARHPFGFGQVPDNWREAVG DSTGMARARTSVSQQRHGGG ASSVSASAFASYRQQPSYP QQFPYPQAPFVSQYENYDPA SRTYDQGFVYYRPAAGGGVGA GAAAVASAGVIYPYQPRARY EEYGGGEELPEYPPQGFYPA PERPYVPPPPPPDGLDRRY SHSLYSEGTPGFEQAYDPGP PEAAQAHG G D PRLGWYPYA NPPPEAYGPPRALEPPYLP



Western blot analysis of various lysates, using LOXL1 antibody (STJ11105012) at 1:1000 dilution. Secondary antibody: HRP Goat Anti-Rabbit IgG (H+L) (STJS000856) at 1:10000 dilution. Lysates/proteins: 25 Mu g per lane. Blocking buffer: 3% nonfat dry milk in TBST. Detection: ECL Basic Kit. Exposure time: 90s.

This product is suitable for in-vitro studies under the RESEARCH USE ONLY [RUO] licence. This product must not be used as for diagnostic or other medical purposes.
St John's Laboratory Ltd, Knowledge Dock Business Centre, University Way, London, E16 2RD | Tel: 0208 223 3081