

Anti-ME1 antibody (472-572) (STJ11105005)

STJ11105005

GENERAL INFORMATION

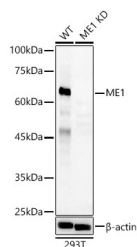
Product Type	Primary antibodies
Short Description	
Applications	WB/ELISA
Host/Source	Rabbit
Reactivity	Human/Mouse/Rat

PRODUCT PROPERTIES

Clonality	Polyclonal
Clone ID	
Concentration	Lot specific
Conjugation	Unconjugated
Purification	Affinity purification
Dilution Range	WB:1:100-1:500 ELISA:Recommended starting concentration is 1 Mu g/mL. Please optimize the concentration based on your specific assay requirements.
Formulation	PBS with 0.05% Proclin300, 50% Glycerol, pH 7.3.
Isotype	IgG
Storage Instruction	Store at -20°C for up to 1 year from the date of receipt, and avoid repeat freeze-thaw cycles.

TARGET INFORMATION

Gene ID	4199
Gene Symbol	ME1
Uniprot ID	MAOX_HUMAN
Immunogen	
Immunogen Region	472-572
Specificity	Recombinant fusion protein containing a sequence corresponding to amino acids 472-572 of human ME1. (NP_002386.1).
Immunogen Sequence	QITDNIFLTAEVIAQQVSD KHLLEGRLYPPLNTIRDVSL KIAEKIVKDAYQEKTATVYP EPQNKEAFVRSQMYSTDYDQ ILPCYSWPPEEVQKIQTQVD Q



Western blot analysis of extracts from wild type (WT) and ME1 knockdown (KD) MCF7 (KD) cells, using ME1 antibody (STJ11105005) at 1:400 dilution. Secondary antibody: HRP Goat Anti-Rabbit IgG (H+L) (STJS000856) at 1:10000 dilution. Lysates/proteins: 25 Mu g per lane. Blocking buffer: 3% nonfat dry milk in TBST. Detection: ECL Basic Kit. Exposure time: 90s.

This product is suitable for in-vitro studies under the RESEARCH USE ONLY [RUO] licence. This product must not be used as for diagnostic or other medical purposes.
St John's Laboratory Ltd, Knowledge Dock Business Centre, University Way, London, E16 2RD | Tel: 0208 223 3081