

Anti-RYR1 antibody (800-900) (STJ11104997)

STJ11104997

GENERAL INFORMATION

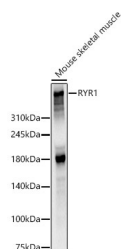
Product Type	Primary antibodies
Short Description	
Applications	WB/ELISA
Host/Source	Rabbit
Reactivity	Mouse

PRODUCT PROPERTIES

Clonality	Polyclonal
Clone ID	
Concentration	Lot specific
Conjugation	Unconjugated
Purification	Affinity purification
Dilution Range	WB:1:1000-1:5000 ELISA:Recommended starting concentration is 1 Mu g/mL. Please optimize the concentration based on your specific assay requirements.
Formulation	PBS with 0.05% Proclin300, 50% Glycerol, pH 7.3.
Isotype	IgG
Storage Instruction	Store at -20°C for up to 1 year from the date of receipt, and avoid repeat freeze-thaw cycles.

TARGET INFORMATION

Gene ID	6261
Gene Symbol	RYR1
Uniprot ID	RYR1_HUMAN
Immunogen	
Immunogen Region	800-900
Specificity	A synthetic peptide corresponding to a sequence within amino acids 800-900 of human RYR1 (NP_000531.2).
Immunogen Sequence	KFLPPPGYAPCHEAVLPRE LHLEPIKEYRREGPRGPHLV GPSRCLSHTDFVPCPVDVQ IMLPPHLERIREKLAENIHE LWALTRIEQGWYGPVRDDN K



Western blot analysis of Mouse skeletal muscle, using RYR1 antibody (STJ11104997) at 1:2000 dilution. Secondary antibody: HRP Goat Anti-Rabbit IgG (H+L) (STJS000856) at 1:10000 dilution. Lysates/proteins: 25 Mu g per lane. Blocking buffer: 3% nonfat dry milk in TBST. Detection: ECL Basic Kit. Exposure time: 30s.

This product is suitable for in-vitro studies under the RESEARCH USE ONLY [RUO] licence. This product must not be used as for diagnostic or other medical purposes.
St John's Laboratory Ltd, Knowledge Dock Business Centre, University Way, London, E16 2RD | Tel: 0208 223 3081