

Anti-CTSB antibody (8-339) [S4983RM] (STJ11104983)
STJ11104983

GENERAL INFORMATION

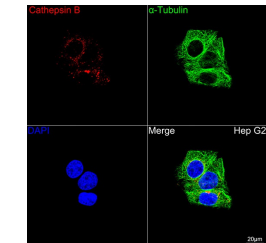
Product Type	Primary antibodies
Short Description	
Applications	WB/IF/ICC/ELISA
Host/Source	Rabbit
Reactivity	Human

PRODUCT PROPERTIES

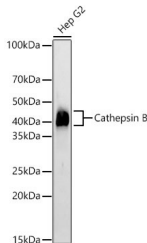
Clonality	Monoclonal
Clone ID	S4983RM
Concentration	Lot specific
Conjugation	Unconjugated
Purification	Affinity purification
Dilution	WB:1:100-1:500
Range	IF/CC:1:50-1:200
	ELISA:Recommended starting concentration is 1 Mu g/mL. Please optimize the concentration based on your specific assay requirements.
Formulation	PBS with 0.05% Proclin300, 0.05% BSA, 50% Glycerol, pH 7.3.
Isotype	IgG
Storage Instruction	Store at -20°C for up to 1 year from the date of receipt, and avoid repeat freeze-thaw cycles.

TARGET INFORMATION

Gene ID	1508
Gene Symbol	CTSB
Uniprot ID	CATB_HUMAN
Immunogen	
Immunogen Region	8-339
Specificity	Recombinant fusion protein containing a sequence corresponding to amino acids 8-339 of human Cathepsin B.
Immunogen Sequence	CCLLVLANARSRPSFHPLSD ELVNYVNRNTTWQAGHNFY NVDMSYLKRLCGTFLGGPKP PQRVMFTEDLKLPASFDARE QWPQCPTIKEIRDQGSGSGC WAFGAVEAISDRICHTNAH VSVEVSAEDLLTCCGSMCGD GCNGGYPAEAWNFWTRKGLV SGGLYESHVGCPRYSIPPCE HHVNGSRPPCTGEGDTPKCS KICEPGYSPTYKQDKHYGYN SYSVSNSEKDIMAEIYKNG



Confocal imaging of Hep G2 cells using α -Cathepsin B Rabbit monoclonal antibody (STJ11104983, dilution 1:200) followed by a further incubation with Cy3 Goat Anti-Rabbit IgG (H+L) (dilution 1:500) (Red). The cells were counterstained with α -Tubulin Mouse monoclonal antibody (dilution 1:400) followed by incubation with ABTbioA® 488-conjugated Goat Anti-Mouse IgG (H+L) antibody (dilution 1:500) (Green). DAPI was used for nuclear staining (Blue). Objective: 100x.



Western blot analysis of lysates from Hep G2 cells, using Cathepsin B Rabbit monoclonal antibody (STJ11104983) at 1:500 dilution. Secondary antibody: HRP Goat Anti-Rabbit IgG (H+L) (STJ1000856) at 1:10000 dilution. Lysates/proteins: 25 Mu g per lane. Blocking buffer: 3% nonfat dry milk in TBST. Enhanced Kit. Exposure time: 120s.

This product is suitable for in-vitro studies under the RESEARCH USE ONLY [RUO] licence. This product must not be used as for diagnostic or other medical purposes.
St John's Laboratory Ltd, Knowledge Dock Business Centre, University Way, London, E16 2RD | Tel: 0208 223 3081