

Anti-WWTR1 antibody (1-270) [S4982RM] (STJ11104982)
STJ11104982

GENERAL INFORMATION

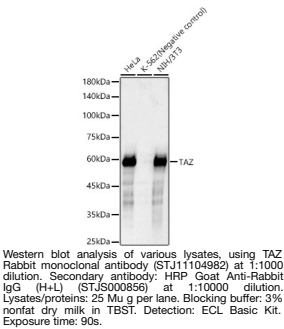
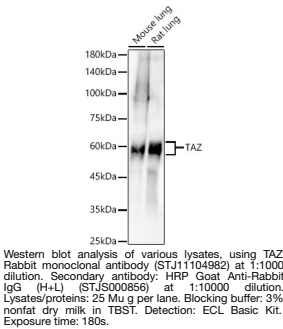
Product Type	Primary antibodies
Short Description	
Applications	WB/ELISA
Host/Source	Rabbit
Reactivity	Human/Mouse/Rat

PRODUCT PROPERTIES

Clonality	Monoclonal
Clone ID	S4982RM
Concentration	Lot specific
Conjugation	Unconjugated
Purification	Affinity purification
Dilution	WB:1:1000-1:2000
Range	ELISA:Recommended starting concentration is 1 Mu g/mL. Please optimize the concentration based on your specific assay requirements.
Formulation	PBS with 0.05% Proclin300, 0.05% BSA, 50% Glycerol, pH 7.3.
Isotype	IgG
Storage	Store at -20°C for up to 1 year from the date of receipt, and avoid repeat freeze-thaw cycles.
Instruction	

TARGET INFORMATION

Gene ID	25937
Gene Symbol	WWTR1
Uniprot ID	WWTR1_HUMAN
Immunogen	
Immunogen Region	1-270
Specificity	Recombinant fusion protein containing a sequence corresponding to amino acids 1-270 of human TAZ (NP_056287.1)
Immunogen Sequence	MNPASAPPLPPPGQQVIHV TODLDTLEALFNSVMNPKP SSWRKILPESFFKEPDSGS HSRQSSTDSSGGHPGPRLAG GAQHVRSHSSPASLQLGTGA GAAGSPAQQHAHLRQQSYDV TDELPLPPGWEMTFTATGQR YFLNHIEKITTWQDPRKAMN QPLNHMNLHFAVSSTPVPQR SMAVSQPNLVMNHQHQQQMA PSTLSQQNHPTQNPPAGLMS MPNALTTQQQQQKLRLQR



This product is suitable for in-vitro studies under the RESEARCH USE ONLY [RUO] licence. This product must not be used as for diagnostic or other medical purposes.
St John's Laboratory Ltd, Knowledge Dock Business Centre, University Way, London, E16 2RD | Tel: 0208 223 3081