

Anti-BTN2A1 antibody (1-100 aa) [S4980RM] (STJ11104980)

STJ11104980

GENERAL INFORMATION

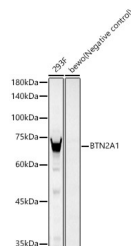
Product Type	Primary antibodies
Short Description	
Applications	WB/ELISA
Host/Source	Rabbit
Reactivity	Human

PRODUCT PROPERTIES

Clonality	Monoclonal
Clone ID	S4980RM
Concentration	Lot specific
Conjugation	Unconjugated
Purification	Affinity purification
Dilution Range	WB:1:1000-1:5000 ELISA:Recommended starting concentration is 1 Mu g/mL. Please optimize the concentration based on your specific assay requirements.
Formulation	PBS with 0.05% Proclin300, 0.05% BSA, 50% Glycerol, pH 7.3.
Isotype	IgG
Storage Instruction	Store at -20°C for up to 1 year from the date of receipt, and avoid repeat freeze-thaw cycles.

TARGET INFORMATION

Gene ID	11120
Gene Symbol	BTN2A1
Uniprot ID	BT2A1_HUMAN
Immunogen	
Immunogen	1-100 aa
Region	
Specificity	Recombinant fusion protein containing a sequence corresponding to amino acids 1-100 of human BTN2A1. (NP_008980.1).
Immunogen	MESAAALHFSRPASLLLLLL SLCALVSAQFIVVGPTDPIL ATVGENTTLRCHLSPEKNAE DMEVRFWRFSQFSPAVFYKG
Sequence	GRERTEEQMEEYRGRTTFVS



Western blot analysis of various lysates, using BTN2A1 antibody (STJ11104980) at 1:2000 dilution. Secondary antibody: HRP Goat Anti-Rabbit IgG (H+L) (STJ5000856) at 1:10000 dilution. Lysates/proteins: 25 Mu g per lane. Blocking buffer: 3% nonfat dry milk in TBST. Detection: ECL Basic Kit. Exposure time: 30s.

This product is suitable for in-vitro studies under the RESEARCH USE ONLY [RUO] licence. This product must not be used as for diagnostic or other medical purposes.
St John's Laboratory Ltd, Knowledge Dock Business Centre, University Way, London, E16 2RD | Tel: 0208 223 3081