

Anti-CD163 antibody (42-261) (STJ11104977)

STJ11104977

GENERAL INFORMATION

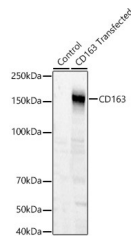
Product Type	Primary antibodies
Short Description	
Applications	WB/IF/ICC/ELISA
Host/Source	Rabbit
Reactivity	Human/Mouse/Rat

PRODUCT PROPERTIES

Clonality	Polyclonal
Clone ID	
Concentration	Lot specific
Conjugation	Unconjugated
Purification	Affinity purification
Dilution	WB:1:500-1:1000
Range	IF/CC:1:50-1:200 ELISA:Recommended starting concentration is 1 μ g/mL. Please optimize the concentration based on your specific assay requirements.
Formulation	PBS with 0.05% Proclin300, 50% Glycerol, pH 7.3.
Isotype	IgG
Storage Instruction	Store at -20°C for up to 1 year from the date of receipt, and avoid repeat freeze-thaw cycles.

TARGET INFORMATION

Gene ID	9332
Gene Symbol	CD163
Uniprot ID	C163A_HUMAN
Immunogen	
Immunogen Region	42-261
Specificity	A synthetic peptide corresponding to a sequence within amino acids 42-261 of human CD163 (NP_004235.4?).
Immunogen Sequence	SSLGGTDKELRLVDGENKCS GRVEVKVQEEWGTVCNNGWS MEAVSVICNQLGCPTAIKAP GWANSSAGSGRIWMDHVSCR GNESALWDCKHDGWGKHSNC THQQDAGVTCSDGSNLEMRL TRGGNMCSGRIEIKFQGRWG TVCDDNFNIDHASVICRQLE CGSAVSFSGSSNFGEGSGPI WFDDLICNGNESALWNCKHQ GWGKHNCDAEDAGVICSKG



Western blot analysis of lysates from wild type (WT) and 293T cells transfected with CD63 using CD163 Rabbit polyclonal antibody (STJ11104977) at 1:700 dilution. Secondary antibody: HRP Goat Anti-Rabbit IgG (H+L) (STJS000856) at 1:10000 dilution. Lysates/proteins: 25 μ g per lane. Blocking buffer: 3% nonfat dry milk in TBST. Detection: ECL Basic Kit. Exposure time: 1s.

This product is suitable for in-vitro studies under the RESEARCH USE ONLY [RUO] licence. This product must not be used as for diagnostic or other medical purposes.

St John's Laboratory Ltd, Knowledge Dock Business Centre, University Way, London, E16 2RD | Tel: 0208 223 3081