

## Anti-UGT1A1 antibody (100-200) [S4969RM] (STJ11104969)

STJ11104969

### GENERAL INFORMATION

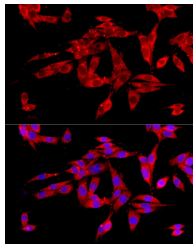
<b>Product Type</b>	Primary antibodies
<b>Short Description</b>	
<b>Applications</b>	IF/ICC/ELISA
<b>Host/Source</b>	Rabbit
<b>Reactivity</b>	Mouse/Rat

### PRODUCT PROPERTIES

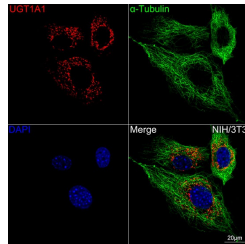
<b>Clonality</b>	Monoclonal
<b>Clone ID</b>	S4969RM
<b>Concentration</b>	Lot specific
<b>Conjugation</b>	Unconjugated
<b>Purification</b>	Affinity purification
<b>Dilution Range</b>	IF/ICC:1:50-1:200 ELISA:Recommended starting concentration is 1 Mu g/mL. Please optimize the concentration based on your specific assay requirements.
<b>Formulation</b>	PBS with 0.05% Proclin300, 0.05% BSA, 50% Glycerol, pH 7.3.
<b>Isotype</b>	IgG
<b>Storage Instruction</b>	Store at -20°C for up to 1 year from the date of receipt, and avoid repeat freeze-thaw cycles.

### TARGET INFORMATION

<b>Gene ID</b>	54658
<b>Gene Symbol</b>	UGT1A1
<b>Uniprot ID</b>	UD11_HUMAN
<b>Immunogen</b>	
<b>Immunogen</b>	100-200
<b>Region</b>	
<b>Specificity</b>	A synthetic peptide corresponding to a sequence within amino acids 100-200 of humanUGT1A1 (NP_000454.1).
<b>Immunogen</b>	FENDSFLQRVIKTYKKIKKD SAMLLSGCSHLLHNKELMAS LAESSFDVMLTDPFLPCSPI VAQYLSLPTVFFLHALPCSL
<b>Sequence</b>	EFEATQCPNPFYSYVPRPLSS H



Immunofluorescence analysis of PC-12 using UGT1A1 antibody (STJ11104969) at dilution of 1:200 (40x lens). Blue: DAPI for nuclear staining.



Confocal imaging of NIH/3T3 cells using UGT1A1 Rabbit monoclonal antibody (STJ11104969, dilution 1:200) (Red). The cells were counterstained with Alpha-Tubulin Mouse monoclonal antibody (dilution 1:400) (Green). DAPI was used for nuclear staining (Blue). Objective: 60x.

This product is suitable for in-vitro studies under the RESEARCH USE ONLY [RUO] licence. This product must not be used as for diagnostic or other medical purposes.  
St John's Laboratory Ltd, Knowledge Dock Business Centre, University Way, London, E16 2RD | Tel: 0208 223 3081