

Anti-Yipf6 antibody (1-83) (STJ11104965)

STJ11104965

GENERAL INFORMATION

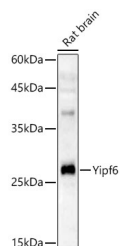
Product Type	Primary antibodies
Short Description	
Applications	WB/ELISA
Host/Source	Rabbit
Reactivity	Mouse/Rat

PRODUCT PROPERTIES

Clonality	Polyclonal
Clone ID	
Concentration	Lot specific
Conjugation	Unconjugated
Purification	Affinity purification
Dilution Range	WB:1:100-1:500 ELISA:Recommended starting concentration is 1 µg/mL. Please optimize the concentration based on your specific assay requirements.
Formulation	PBS with 0.05% Proclin300, 50% Glycerol, pH 7.3.
Isotype	IgG
Storage Instruction	Store at -20°C for up to 1 year from the date of receipt, and avoid repeat freeze-thaw cycles.

TARGET INFORMATION

Gene ID	77929
Gene Symbol	Yipf6
Uniprot ID	YIPF6_MOUSE
Immunogen	
Immunogen Region	1-83
Specificity	Recombinant fusion protein containing a sequence corresponding to amino acids 1-83 of mouse Yipf6 (NP_997516.1).
Immunogen Sequence	MAEADSPGEQEAASKPLF AGLSDVSISQDIPIEGEITI PSRARAQEHDSSTLNESIRR TIMRDLKAVGRKFMHVLPR KSN



Western blot analysis of lysates from Rat brain using Yipf6 Rabbit polyclonal antibody (STJ11104965) at 1:400 dilution. Secondary antibody:HRP Goat Anti-Rabbit IgG (H+L) (STJS000856) at 1:10000 dilution. Lysates/proteins: 25 µg per lane. Blocking buffer: 3% nonfat dry milk in TBST. Detection: ECL Enhanced Kit. Exposure time: 90s.

This product is suitable for in-vitro studies under the RESEARCH USE ONLY [RUO] licence. This product must not be used as for diagnostic or other medical purposes.
St John's Laboratory Ltd, Knowledge Dock Business Centre, University Way, London, E16 2RD | Tel: 0208 223 3081