

Anti-COX4I1 antibody (23-98) (STJ11104961)
STJ11104961

GENERAL INFORMATION

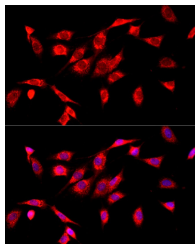
Product Type	Primary antibodies
Short Description	
Applications	WB/IHC-P/IF/ICC/ELISA
Host/Source	Rabbit
Reactivity	Human/Mouse/Rat

PRODUCT PROPERTIES

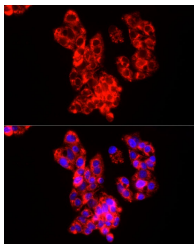
Clonality	Polyclonal
Clone ID	
Concentration	Lot specific
Conjugation	Unconjugated
Purification	Affinity purification
Dilution Range	WB:1:500-1:1000 IHC-P:1:50-1:200 IF/ICC:1:50-1:200 ELISA:Recommended starting concentration is 1 Mu g/mL. Please optimize the concentration based on your specific assay requirements.
Formulation	PBS with 0.05% Proclin300, 50% Glycerol, pH 7.3.
Isotype	IgG
Storage Instruction	Store at -20°C for up to 1 year from the date of receipt, and avoid repeat freeze-thaw cycles.

TARGET INFORMATION

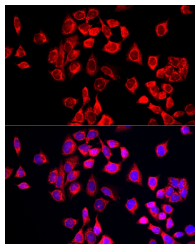
Gene ID	1327
Gene Symbol	COX4I1
Uniprot ID	COX4I1_HUMAN
Immunogen	
Immunogen Region	23-98
Specificity	Recombinant fusion protein containing a sequence corresponding to amino acids 23-98 of human COX IV. (NP_001852.1).
Immunogen Sequence	AHESVVKSEDFSLPAYMDRR DHPLPEVAHVKHLSAQKAL KEKEKASWSSLSMDEKVELY RIKFKESFAEMNRGSN



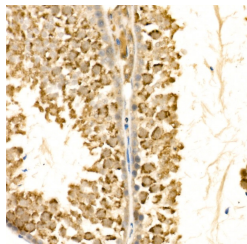
Immunofluorescence analysis of NIH/3T3 cells using [KD Validated] COX IV Rabbit polyclonal antibody (STJ11104961) at dilution of 1:50 (40x lens). Blue: DAPI for nuclear staining.



Immunofluorescence analysis of HepG2 cells using [KD Validated] COX IV Rabbit polyclonal antibody (STJ11104961) at dilution of 1:50 (40x lens). Blue: DAPI for nuclear staining.



Immunofluorescence analysis of HeLa cells using [KD Validated] COX IV Rabbit polyclonal antibody (STJ11104961) at dilution of 1:50 (40x lens). Blue: DAPI for nuclear staining.



Immunohistochemistry analysis of paraffin-embedded mouse testis using [KD Validated] COX IV Rabbit polyclonal antibody (STJ11104961) at dilution of 1:100 (40x lens). Perform high pressure antigen retrieval with 10 mM citrate buffer pH 6.0 before commencing with immunohistochemistry staining protocol.