

Anti-PSPH antibody (1-225 aa) [S4949RM] (STJ11104949)

STJ11104949

GENERAL INFORMATION

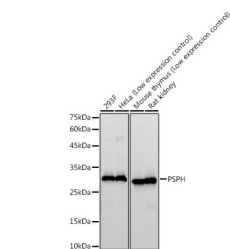
Product Type	Primary antibodies
Short Description	
Applications	WB/ELISA
Host/Source	Rabbit
Reactivity	Human/Mouse/Rat

PRODUCT PROPERTIES

Clonality	Monoclonal
Clone ID	S4949RM
Concentration	Lot specific
Conjugation	Unconjugated
Purification	Affinity purification
Dilution	WB:1:2000-1:10000
Range	ELISA:Recommended starting concentration is 1 Mu g/mL. Please optimize the concentration based on your specific assay requirements.
Formulation	PBS with 0.05% Proclin300, 0.05% BSA, 50% Glycerol, pH 7.3.
Isotype	IgG
Storage	Store at -20°C for up to 1 year from the date of receipt, and avoid repeat freeze-thaw cycles.
Instruction	

TARGET INFORMATION

Gene ID	5723
Gene Symbol	PSPH
Uniprot ID	SERB_HUMAN
Immunogen	
Immunogen Region	1-225 aa
Specificity	Recombinant fusion protein containing a sequence corresponding to amino acids 1-225 of human PSPH. (NP_004568.2).
Immunogen Sequence	MVSHSELRLFYSDAVCFD VDSTVIREEGIDELAKICGV EDAVSEMTRRAMGGAVPFKA ALTERLALIQPSREQVQRLL AEQPPHLTPGIRELVSRLQE RNVQVFLISGGFRSIVEHVA SKLNIPATNVFANRLKFYFN GEYAGFDETQPTAESGGKGK VIKLLKEKFHFKIIMIGDG ATDMEACPPADAFIGFGGNV IRQVVKDNAKWYITDFVELL GELEE



Western blot analysis of various lysates, using PSPH antibody (STJ11104949) at 1:10000 dilution. Secondary antibody: HRP Goat Anti-Rabbit IgG (H+L) (STJS000856) at 1:10000 dilution. Lysates/proteins: 25 Mu g per lane. Blocking buffer: 3% nonfat dry milk in TBST. Detection: ECL Basic Kit. Exposure time: 90s.

This product is suitable for in-vitro studies under the RESEARCH USE ONLY [RUO] licence. This product must not be used as for diagnostic or other medical purposes.
St John's Laboratory Ltd, Knowledge Dock Business Centre, University Way, London, E16 2RD | Tel: 0208 223 3081