

Anti-SMAD5 antibody (186-260) [S4940RM] (STJ11104940)

STJ11104940

GENERAL INFORMATION

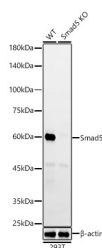
Product Type	Primary antibodies
Short Description	
Applications	WB/ELISA
Host/Source	Rabbit
Reactivity	Human/Rat

PRODUCT PROPERTIES

Clonality	Monoclonal
Clone ID	S4940RM
Concentration	Lot specific
Conjugation	Unconjugated
Purification	Affinity purification
Dilution Range	WB:1:500-1:1000 ELISA:Recommended starting concentration is 1 µg/mL. Please optimize the concentration based on your specific assay requirements.
Formulation	PBS with 0.05% Proclin300, 0.05% BSA, 50% Glycerol, pH 7.3.
Isotype	IgG
Storage Instruction	Store at -20°C for up to 1 year from the date of receipt, and avoid repeat freeze-thaw cycles.

TARGET INFORMATION

Gene ID	4090
Gene Symbol	SMAD5
Uniprot ID	SMAD5_HUMAN
Immunogen	
Immunogen Region	186-260
Specificity	Recombinant fusion protein containing a sequence corresponding to amino acids 186-260 of human Smad5 (NP_005894.3).
Immunogen Sequence	PLSPNSPYPPSPASSTYPNS PASSGPGSPFQLPADTPPPA YMPDDQMGQDNSQPMDSN NMIPQIMPSISSRDV



Western blot analysis of lysates from wild type (WT) and Smad5 knockout (KO) 293T (KO) cells, using [KO Validated] Smad5 Rabbit monoclonal antibody (STJ11104940) at 1:1000 dilution. Secondary antibody: HRP-Goat Anti-Rabbit IgG (H+L) (STJ5000856) at 1:10000 dilution. Lysates/proteins: 25 µg/lane. Blocking buffer: 3% nonfat dry milk in TBST. Detection: ECL Enhanced Kit. Exposure time: 180s.

This product is suitable for in-vitro studies under the RESEARCH USE ONLY [RUO] licence. This product must not be used as for diagnostic or other medical purposes.
St John's Laboratory Ltd, Knowledge Dock Business Centre, University Way, London, E16 2RD | Tel: 0208 223 3081