

Anti-IFN-beta antibody (1-182) [S4936RM] (STJ11104936)
STJ11104936

GENERAL INFORMATION

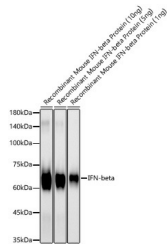
Product Type	Primary antibodies
Short Description	
Applications	WB/ELISA
Host/Source	Rabbit
Reactivity	Mouse

PRODUCT PROPERTIES

Clonality	Monoclonal
Clone ID	S4936RM
Concentration	Lot specific
Conjugation	Unconjugated
Purification	Affinity purification
Dilution	WB:1:2000-1:7000
Range	ELISA:Recommended starting concentration is 1 µg/mL. Please optimize the concentration based on your specific assay requirements.
Formulation	PBS with 0.05% Proclin300, 0.05% BSA, 50% Glycerol, pH 7.3.
Isotype	IgG
Storage	Store at -20°C for up to 1 year from the date of receipt, and avoid repeat freeze-thaw cycles.
Instruction	

TARGET INFORMATION

Gene ID	15977
Gene Symbol	ifnb1
Uniprot ID	IFNB_MOUSE
Immunogen	
Immunogen Region	1-182
Specificity	Recombinant fusion protein containing a sequence corresponding to amino acids 1-182 of mouse IFN-beta (NP_034640.1)
Immunogen Sequence	MNNRWILHAAFLLCFSTAL SINYKQLQLQERTNIRKCQE LLEQLNGKINLTYRADFKIP MEMTEKMQKSYTAFIQEML QNVFLVFRNNFSSTGWNETH VVRLDELHQQTVFLKTVLE EKQEERLTWEMSSTALHLKS YYWRVQRYLKLKYNYSYAWM VVRAEIFRNFILIRRLTRNF QN



Western blot analysis of recombinant Mouse IFN-beta Protein using IFN-beta Rabbit monoclonal antibody (STJ11104936) at 1:6000 dilution. Secondary antibody: HRP Goat Anti-Rabbit IgG (H+L) (STJ5000856) at 1:10000 dilution. Lysates/proteins: 10ng/5ng/1ng per lane. Blocking buffer: 3% nonfat dry milk in TBST. Detection: ECL Basic Kit. Exposure time: 30s.

This product is suitable for in-vitro studies under the RESEARCH USE ONLY [RUO] licence. This product must not be used as for diagnostic or other medical purposes.
St John's Laboratory Ltd, Knowledge Dock Business Centre, University Way, London, E16 2RD | Tel: 0208 223 3081