

Anti-Siglec1 antibody (20-138) (STJ11104915)

STJ11104915

GENERAL INFORMATION

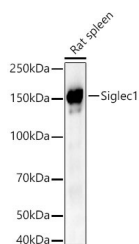
Product Type	Primary antibodies
Short Description	
Applications	WB/ELISA
Host/Source	Rabbit
Reactivity	Rat

PRODUCT PROPERTIES

Clonality	Polyclonal
Clone ID	
Concentration	Lot specific
Conjugation	Unconjugated
Purification	Affinity purification
Dilution Range	WB:1:500-1:1000 ELISA:Recommended starting concentration is 1 µg/mL. Please optimize the concentration based on your specific assay requirements.
Formulation	PBS with 0.05% Proclin300, 50% Glycerol, pH 7.3.
Isotype	IgG
Storage Instruction	Store at -20°C for up to 1 year from the date of receipt, and avoid repeat freeze-thaw cycles.

TARGET INFORMATION

Gene ID	20612
Gene Symbol	Siglec1
Uniprot ID	SN_MOUSE
Immunogen	
Immunogen Region	20-138
Specificity	Recombinant fusion protein containing a sequence corresponding to amino acids 20-138 of mouse Siglec1 (NP_035556.3).
Immunogen Sequence	TWGVSSPKNVQGLSGSCLLI PCIFSYPADVPVSNGITAW YYDYSGKRQVVIHSGDPKLV DKRFRGRAELMGNMDHKVCN LLLKDLKPEDSGTYNFRFEI SDSNRWLDVKGTTVTITD



Western blot analysis of lysates from Rat spleen using A. Siglec1 - Rabbit polyclonal antibody (STJ11104915) at 1:700 dilution. Secondary antibody: HRP-Goat Anti-Rabbit IgG (H+L) (STJSD00856) at 1:10000 dilution. Lysates/proteins: 25 µg per lane. Blocking buffer: 3% nonfat dry milk in TBST. Detection: ECL Basic Kit. Exposure time: 90s.

This product is suitable for in-vitro studies under the RESEARCH USE ONLY [RUO] licence. This product must not be used as for diagnostic or other medical purposes.
St John's Laboratory Ltd, Knowledge Dock Business Centre, University Way, London, E16 2RD | Tel: 0208 223 3081