

Anti-MTHFD2 antibody (40-250) [S4901RM] (STJ11104901)

STJ11104901

GENERAL INFORMATION

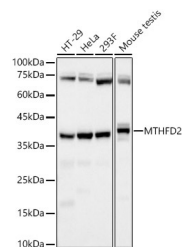
Product Type	Primary antibodies
Short Description	
Applications	WB/ELISA
Host/Source	Rabbit
Reactivity	Human/Mouse

PRODUCT PROPERTIES

Clonality	Monoclonal
Clone ID	S4901RM
Concentration	Lot specific
Conjugation	Unconjugated
Purification	Affinity purification
Dilution	WB:1:2000-1:8000
Range	ELISA:Recommended starting concentration is 1 µg/mL. Please optimize the concentration based on your specific assay requirements.
Formulation	PBS with 0.05% Proclin300, 0.05% BSA, 50% Glycerol, pH 7.3.
Isotype	IgG
Storage	Store at -20°C for up to 1 year from the date of receipt, and avoid repeat freeze-thaw cycles.
Instruction	

TARGET INFORMATION

Gene ID	10797
Gene Symbol	MTHFD2
Uniprot ID	MTDC_HUMAN
Immunogen	
Immunogen Region	40-250
Specificity	Recombinant fusion protein containing a sequence corresponding to amino acids 40-250 of human MTHFD2 (NP_006627.2).
Immunogen Sequence	ISGRKLAQQIKQEVQRQVEE WVASGNKRPHLSVILVGENP ASHSYVLNKTRAAAVVGINS ETIMKPASISEEELNLINK LNNDNDVDGLLVQLPLPEHI DERRICNAVSPDKDVGDFHV INVGRMCLDQYSMLPATPWG VWEIKRTGIPTLGKNVVVA GRSKNVGMPIAMLLHTDGAH ERPGGDATVTISHRYTPKEQ LKKHTILADIV



Western blot analysis of various lysates, using MTHFD2 Rabbit monoclonal antibody (STJ11104901) at 1:7000 dilution. Secondary antibody: HRP Goat Anti-Rabbit IgG (H+L) (STJS000856) at 1:10000 dilution. Lysates/proteins: 25 µg per lane. Blocking buffer: 3% nonfat dry milk in TBST. Detection: ECL Basic Kit. Exposure time: 30s.

This product is suitable for in-vitro studies under the RESEARCH USE ONLY [RUO] licence. This product must not be used as for diagnostic or other medical purposes.
St John's Laboratory Ltd, Knowledge Dock Business Centre, University Way, London, E16 2RD | Tel: 0208 223 3081