

Anti-POU4F1 antibody (1-100 aa) (STJ11104894)

STJ11104894

GENERAL INFORMATION

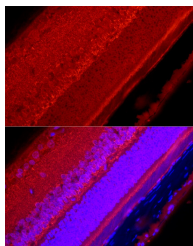
Product Type	Primary antibodies
Short Description	
Applications	WB/IF/ICC/ELISA
Host/Source	Rabbit
Reactivity	Human/Mouse/Rat

PRODUCT PROPERTIES

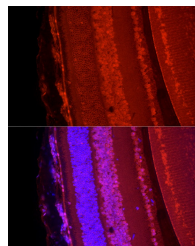
Clonality	Polyclonal
Clone ID	
Concentration	Lot specific
Conjugation	Unconjugated
Purification	Affinity purification
Dilution Range	WB:1:500-1:1000 IF/ICC:1:50-1:200 ELISA:Recommended starting concentration is 1 µg/mL. Please optimize the concentration based on your specific assay requirements.
Formulation	PBS with 0.05% Proclin300, 50% Glycerol, pH 7.3.
Isotype	IgG
Storage	Store at -20°C for up to 1 year from the date of receipt, and avoid repeat freeze-thaw cycles.
Instruction	

TARGET INFORMATION

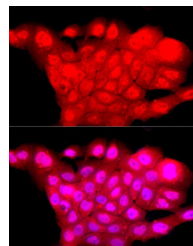
Gene ID	5457
Gene Symbol	POU4F1
Uniprot ID	PO4F1_HUMAN
Immunogen	
Immunogen Region	1-100 aa
Specificity	A synthetic peptide corresponding to a sequence within amino acids 1-100 of human POU4F1 (NP_006228.3).
Immunogen Sequence	MMSMNSKQPHFAMHPTLPEH KPSLHSSSEAIRRACLPTP PLQSNLFASLDETLARAEAA LAAVDIAVSQGKSHPFKPDATYHTMNSVPCTSTSTVPLAH



Immunofluorescence analysis of rat eye cells using POU4F1Rabbit polyclonal antibody (STJ11104894) at dilution of 1:50 (40x lens). Blue: DAPI for nuclear staining.



Immunofluorescence analysis of mouse eye cells using POU4F1Rabbit polyclonal antibody (STJ11104894) at dilution of 1:50 (40x lens). Blue: DAPI for nuclear staining.



Immunofluorescence analysis of A-431 cells using POU4F1Rabbit polyclonal antibody (STJ11104894) at dilution of 1:50 (40x lens). Blue: DAPI for nuclear staining.

This product is suitable for in-vitro studies under the RESEARCH USE ONLY [RUO] licence. This product must not be used as for diagnostic or other medical purposes.
St John's Laboratory Ltd, Knowledge Dock Business Centre, University Way, London, E16 2RD | Tel: 0208 223 3081