

## Anti-CD163 antibody (861-961) [S4893RM] (STJ11104893)

STJ11104893

### GENERAL INFORMATION

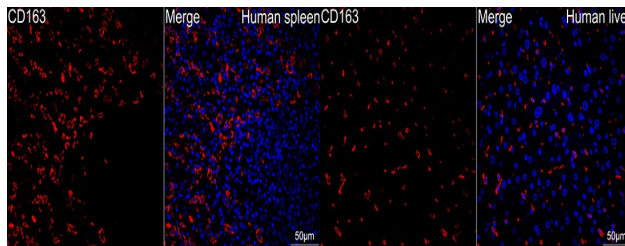
<b>Product Type</b>	Primary antibodies
<b>Short Description</b>	
<b>Applications</b>	IF/ICC/ELISA
<b>Host/Source</b>	Rabbit
<b>Reactivity</b>	Human

### PRODUCT PROPERTIES

<b>Clonality</b>	Monoclonal
<b>Clone ID</b>	S4893RM
<b>Concentration</b>	Lot specific
<b>Conjugation</b>	Unconjugated
<b>Purification</b>	Affinity purification
<b>Dilution Range</b>	IF/ICC: 1:50-1:200 ELISA: Recommended starting concentration is 1 µg/mL. Please optimize the concentration based on your specific assay requirements.
<b>Formulation</b>	PBS with 0.05% Proclin300, 0.05% BSA, 50% Glycerol, pH 7.3.
<b>Isotype</b>	IgG
<b>Storage</b>	Store at -20°C for up to 1 year from the date of receipt, and avoid repeat freeze-thaw cycles.
<b>Instruction</b>	

### TARGET INFORMATION

<b>Gene ID</b>	9332
<b>Gene Symbol</b>	CD163
<b>Uniprot ID</b>	C163A_HUMAN
<b>Immunogen</b>	
<b>Immunogen Region</b>	861-961
<b>Specificity</b>	A synthetic peptide corresponding to a sequence within amino acids 861-961 of human CD163 (NP_004235.4).
<b>Immunogen Sequence</b>	GVVCRQLGCADKKGKINPASPDKAMSIPMWVDNVQCPKGPDTLWQCPSSPWEEKRLASPSEETWITCDNKIRLQEGPTSCSG RVEIWHGGSWGTVCDDSWDL D



Confocal imaging of a paraffin-embedded Human spleen tissue using a CD163 Rabbit monoclonal antibody (STJ11104893, dilution 1:200) followed by a further incubation with Cy3 Goat Anti-Rabbit IgG (H+L) (dilution 1:500) (Red). DAPI was used for nuclear staining (Blue). Objective: 40x.

Confocal imaging of a paraffin-embedded Human liver tissue using a CD163 Rabbit monoclonal antibody (STJ11104893, dilution 1:200) followed by a further incubation with Cy3 Goat Anti-Rabbit IgG (H+L) (dilution 1:500) (Red). DAPI was used for nuclear staining (Blue). Objective: 40x. Perform high pressure antigen retrieval with 0.01 M citrate buffer (pH 6.0) prior to IF staining.

This product is suitable for in-vitro studies under the RESEARCH USE ONLY [RUO] licence. This product must not be used as for diagnostic or other medical purposes.  
St John's Laboratory Ltd, Knowledge Dock Business Centre, University Way, London, E16 2RD | Tel: 0208 223 3081