

Anti-GPC3 antibody (480-580 aa) [S4890RM] (STJ11104890)

STJ11104890

GENERAL INFORMATION

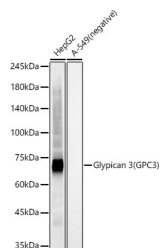
Product Type	Primary antibodies
Short Description	
Applications	WB/ELISA
Host/Source	Rabbit
Reactivity	Human

PRODUCT PROPERTIES

Clonality	Monoclonal
Clone ID	S4890RM
Concentration	Lot specific
Conjugation	Unconjugated
Purification	Affinity purification
Dilution Range	WB:1:2000-1:20000 ELISA: Recommended starting concentration is 1 Mu g/mL. Please optimize the concentration based on your specific assay requirements.
Formulation	PBS with 0.05% Proclin300, 0.05% BSA, 50% Glycerol, pH 7.3.
Isotype	IgG
Storage	Store at -20°C for up to 1 year from the date of receipt, and avoid repeat freeze-thaw cycles.
Instruction	

TARGET INFORMATION

Gene ID	2719
Gene Symbol	GPC3
Uniprot ID	GPC3_HUMAN
Immunogen	
Immunogen	480-580 aa
Region	
Specificity	A synthetic peptide corresponding to a sequence within amino acids 480-580 of human Glypican 3 (GPC3). (NP_004475.1).
Immunogen	KGRVLDKNLDEEGFESGDCG DDEDECIGSGDGMKVKNQ LRFLAELAYDLVDVDPAGNS QQATPKDNEISTFHNLGNVH
Sequence	SPLKLLTSMASVVCFFFLV H



Western blot analysis of various lysates, using Glypican 3 (GPC3) antibody (STJ11104890) at 1:20000 dilution. Secondary antibody: HRP Goat Anti-Rabbit IgG (H+L) (STJS000856) at 1:10000 dilution. Lysates/proteins: 25 Mu g per lane. Blocking buffer: 3% nonfat dry milk in TBST. Detection: ECL Basic Kit. Exposure time: 30s.

This product is suitable for in-vitro studies under the RESEARCH USE ONLY [RUO] licence. This product must not be used as for diagnostic or other medical purposes.
St John's Laboratory Ltd, Knowledge Dock Business Centre, University Way, London, E16 2RD | Tel: 0208 223 3081